

## **Historic, archived document**

Do not assume content reflects current scientific knowledge, policies, or practices.



BOYD  
Nursery  
Company

McMinnville  
Tenn.



Forest  
and  
Shade  
**TREES**  
Ornamental  
Shrubs  
Roses  
Bulbs  
Evergreens  
1935

# SPECIAL BARGAINS

## 12 BEAUTIFUL HARDY SHRUBS

- 2 Altheas, assorted
- 1 Weigela, Pink
- 2 Deutzia
- 1 Exchorda, Pearl Bush
- 1 Purple Lilac
- 2 Forsythia
- 1 Hydrangea P. G.
- 2 Lonicera, Bush Honeysuckle

12 Plants, size 18 to 24 inch,  
all for \$2.00

## FAMOUS ROSE COLLECTION

- 1 Talisman, gold, orange and red
- 1 President Hoover, pink and yellow blended
- 1 Souvenir de Claudius Pernet, golden yellow
- 1 Dame Edith Helen, glowing pink
- 1 Killarney White, snowy white
- 1 Francis Scott Key, crimson

6 of the Newest and Finest Roses,  
all for \$2.50

## POPULAR LANDSCAPE COLLECTION

- 2 Red-leaf Barberry
- 4 Japanese Barberry
- 1 Purple Lilac
- 6 Spirea Van Houttei
- 2 Roses, monthly blooming
- 1 Butterfly Bush
- 2 Abelia Grandiflora
- 2 Spirea Anthony Waterer
- 1 Red Bud tree
- 1 White Flowering Dogwood
- 2 Forsythia, Golden Bell
- 2 Philadelphus Mock Orange
- 1 Chinese Elm tree
- 1 Magnolia Tripetala

28 Plants, all for \$7.00

## FLOWERING TREE COLLECTION

- 1 Redbud
- 1 White Flowering Dogwood
- 1 Bechtel's Flowering Crab
- 1 White Fringe
- 1 Halesia, Silver Bell
- 1 Andromeda, Sour Wood

6 Flowering Trees, all for \$2.00

## OLD-FASHIONED FAVORITES

- 1 Snowball
- 1 Trailing Jasminum
- 1 Spice Bush
- 1 Lilac
- 2 Peonies
- 1 Calycanthus, Sweet Shrub
- 1 Pussy Willow
- 1 White Snowberry
- 3 Vinca Minor, Evergreen Vine

12 Plants, all for \$2.00

## CLIMBING AND FLOWERING VINES

- 2 Scarlet Trumpet Honeysuckle
- 1 Boston Ivy
- 1 Mary Wallace Climbing Rose
- 1 Trumpet Vine
- 2 Vinca Minor

7 Vines, all for \$1.00

## FAVORITE ROSE GARDEN COLLECTION

- 1 Red Radiance
- 1 Pink Radiance
- 1 K. A. Victoria, white
- 1 Lady Hillingdon, yellow
- 1 Paul's Scarlet, climbing
- 4 Everblooming Roses and 1 Climber,  
all for \$1.50

## EVERGREEN BARGAIN GROUP

- 2 Abelia Grandiflora
- 2 Pyramidal Arbor Vitae
- 1 Norway Spruce
- 2 Red Pine trees
- 2 Canadensis (Spreading Juniper)
- 2 Nandina
- 1 Retinospora
- 2 Irish Juniper

14 Evergreens, all for \$10.00

NOTE: All special collections F. O. B. McMinnville. Please state manner of shipment preferred, adding 15% if wanted by parcel post.



## ANNOUNCEMENT

It is with great pleasure that we present herewith our catalog for season 1935. First of all we want to extend greetings and best wishes for a prosperous year in 1935 and to thank each and every one of our customers for their patronage during the past year, and hope that we may have the pleasure of receiving your valued orders for the coming year.

Those who have known and bought from the "Boyd's" in the past, many for a long term of years, of course, need no introduction. To those unacquainted with us, we are glad to give the following bit of information.

Back in the year 1887, J. H. H. Boyd, the founder of our business and father of F. C. Boyd, started gathering and selling tree seeds and soon after began gathering native trees and shrubs and growing them in the nursery. There were few schools at that time in the Cumberland Mountains, and little opportunity to attend, so his education was the result of his own efforts. His intimate and life long association with trees and plants, together with his interest and accurate and correct knowledge, made him a leader in the growing of nursery stock. He died in 1924, and left his work, the nursery, in the hands of his two sons, who are trying to carry on the principles of fair dealing established in the beginning.

Our aim has always been to grow first class nursery stock at lowest possible prices, eliminating all unnecessary expenses in growing and marketing, selling direct to the planter fresh dug plants.

We have tried to give very complete and accurate descriptions. The catalog is our only representative, we have no traveling agents. At the prices we are quoting in our catalog, it would be impossible to send out traveling salesmen; we would lose money, as such salesmen usually cost about 40 per cent of the selling price. This also enables you to make up your order in your own home, at your leisure, without too much pressure.

We have many customers over the country that have been sending us their orders from year to year, and we are proud of them, and trust we may add you to our growing list of pleased customers. Of course, our reputation depends on the class of plants we send out, and the service that we render, and if you favor us with your order, we guarantee to please you.

All packing and shipping of orders is personally looked after by competent help; shipments are put up in the best possible manner, and stock is packed for long distance shipments.

**Shipping Season**—We usually begin digging and shipping nursery stock October 10th, and with slight interruptions during the bad weather, we ship all winter, up to May 1st.

## INDEX

Abelia -----	25	Diervilla -----	13	Ornamental Flowering Shrubs -	
Aesculus -----	15	Digitalis -----	36	-----	3-13
Ailanthus -----	15	Diospyros -----	19	Ornamental Vines -----	28-30
Almond, Amygdalus -----	3	Dogwood -----	16, 17	Ornamental Grasses -----	36
Althea -----	3	Dutchman's Pipe Vine -----	28	Pachysandra, Japanese	
Amelanchier -----	15	Elder -----	6	Spurge -----	29
Ampelopsis -----	28	Elm -----	17	Passiflora -----	29
Andromeda -----	15	English Laurel -----	27	Paw Paw -----	19
Apples -----	39	Euonymus -----	6, 26, 28, 29	Peaches -----	40
Aquilegia -----	36	Exochorda -----	6	Pears -----	41
Aralia -----	4	Fagus -----	15	Pecans -----	30
Arbor Vitae -----	24	Figs -----	42	Peonies -----	35
Aristolochia -----	28	Fir -----	21	Perennial Plants -----	36, 38
Aronia -----	4	Flowering Bulbs -----	33, 36	Persimmon -----	19
Asclepias -----	37	Forest Tree Seedlings -----	44	Philadelphus -----	9
Ash -----	15	Forsythia -----	6	Phlox -----	38
Asimina -----	19	Fraxinus -----	15	Pine -----	22, 23
Asparagus -----	39	Fruits -----	39, 43	Platanus -----	20
Astilbe -----	37	Gaillardia -----	37	Plums -----	42
Azalea -----	4, 25	Gardenia -----	26	Poplar -----	19, 20
Basswood, Tilia -----	15	Gladiolus -----	34, 35	Privet -----	8, 9, 26
Beech -----	15	Golden Bell -----	6	Prunus -----	9, 10
Berberis -----	4	Grapes -----	43	Raspberries -----	42
Betchel's Crab -----	8	Gypsophila -----	37	Retinospora -----	23
Bignonia -----	28	Hackberry -----	17	Rhododendron -----	27
Birch -----	15	Halesia -----	17	Rhamnus -----	20
Blackberries -----	42	Hardy Ferns -----	38	Rhubarb Roots -----	39
Black Haw -----	20	Hawthorn -----	17	Rhus -----	10
Boxwood -----	25, 26	Hazelnut -----	17, 30	Robinia -----	10, 20
Buckthorn -----	20	Hedera -----	29	Roses -----	31-32
Buddleia -----	4	Hemlock Spruce -----	25	Salix -----	27
Bush Honeysuckle -----	8	Hibiscus -----	3, 4	Stephanandra -----	12
Broad-Leaved Evergreen -----	25, 27	Holly -----	7, 26, 27	Serviceberry -----	15
Callicarpa -----	4	Hollyhocks -----	38	Shade Trees -----	14-20
Calycanthus -----	4	Honeysuckle Vines -----	29	Shasta Daisies -----	38
Cannas -----	33	Hornbeam -----	16	Shrub Dogwood -----	4, 5
Cape Jasmine -----	26	Horse Chestnut -----	15	Silver Bell -----	17
Carpinus -----	16	Hydrangea -----	6, 7	Snowball -----	13
Catalpa -----	16	Hypericum -----	7	Snowberry -----	12
Cedar -----	22	Indian Currant -----	4	Spireas -----	11
Cedrus Deodara -----	21	Ilex -----	7, 26, 27	Spruce -----	23
Celastrus -----	28	Iris -----	35, 36	Strawberries -----	43
Celtis -----	17	Ivy -----	28, 29	Stuartia -----	12
Cercis -----	16	Jasminum -----	7	Sumac -----	10
Chaste Tree -----	13	Juniper -----	21, 22	Styrax Japonica -----	12
Cherry Laurel -----	27	Kalmia -----	26	Sweet Shrub -----	4
Cherries -----	41	Kerria -----	7	Sycamore -----	20
Chestnuts -----	30	Kudzu -----	29	Symphoricarpos -----	12
Chionanthus -----	16	Laurel -----	26, 27	Syringa -----	8, 9
Chokeberry -----	4	Ligustrum -----	8, 9, 26	Tamarix -----	12
Cladrastis -----	16	Lilacs -----	8	Tecoma Radicans -----	29
Clematis -----	28	Lilies -----	33	Thuja -----	24
Clethra -----	4	Linden -----	15	Tilia -----	15
Columbine -----	36	Lindera -----	8	Tsuga -----	25
Coniferous Evergreens -----	21, 25	Liquidambar -----	17	Tuberose -----	37
Coralberry -----	4	Liriodendron -----	18	Tulip Tree -----	18
Coreopsis -----	38	Locust -----	10, 20	Trumpet Vine -----	28, 29
Cornus -----	4, 5, 16, 17	Lonicera -----	8, 29	Ulmus -----	17
Corylus -----	17, 30	Lycium -----	29	Viburnum -----	12, 13, 20
Cotoneaster -----	5, 26	Magnolia -----	18, 27	Vinca Minor -----	29
Crape Myrtle -----	5	Mahonia -----	27	Vitex -----	13
Crataegus -----	17	Mallow Marvels -----	4	Vitis -----	29, 30
Cydonia -----	5	Maples -----	14	Walnuts -----	30
Cypress -----	21, 23, 24	Matrimony Vine -----	29	Weigela -----	13
Dahlias -----	36	Mulberries -----	18	Willows -----	20
Delphinium -----	38	Nandina -----	27	Wisteria -----	30
Deutzia -----	5	Nut Trees -----	30	Witch Hazel -----	17
Dicentra -----	37	Nyssa, Sour Gum -----	18	Yucca Filamentosa -----	39



The Trees and Shrubs give mid-year Cheer; but Evergreens work all the year.

## Ornamental Flowering Shrubs

Add Beauty, Charm and Color to the Home Grounds and Garden

The Ornamental, Hardy Flowering Shrub group includes all those deciduous, blooming and berry-bearing woody plants that are ordinarily called shrubs. They naturally cover a wide range as to size, from very low-growing plants to those that are tall enough for screens and windbreaks. In color of blossom, character of growth, adaptability to soil, you will find something suited for every location. They will put the finishing touches to your home grounds.

**ALMOND, Amygdalus**—Dwarf double Pink Flowering Almond. Small shrubs whose upright branches are literally covered their entire length in earliest spring before the leaves appear, with blooms like small roses. Plant for early bloom.

Prices	Each	10
12 to 18 inch -----	\$0.25	\$2.00
18 to 24 inch -----	.35	3.00
2 to 3 feet -----	.50	4.00

**ALTHEA, Rose of Sharon**—Ideal flowering shrubs because they are filled with bloom during the hot, dry season, when flowers are scarce. They grow readily and bloom freely in all soils and situations. We can supply the following varieties, heavy, nice well branched plants:

- Anemonaeflorus—Large, double red.
- Amplissima—Double rosy-red, blooming early.
- Ardens—Double purplish blooms.
- Boule de Feu—Fine double red.
- Bicolor—Double white with red markings.
- Joan of Arc—Pure white and very double.
- Pulcherimus—Flowers of variegated tints.
- Lady Stanley—White shaded to rose.
- Paeoniflorus—White with carmine center.
- Rubis—Single pink.
- Totus Alba—Single white.

Prices of Althea	Each	10
18 to 24 inch -----	\$0.20	\$1.50
2 to 3 feet -----	.30	2.50
3 to 4 feet -----	.40	3.50

**ALTHEA Seedlings**—Grown from seeds and are single mixed colors of bloom. They are beautiful seedlings, will make a fine hedge, and you can afford them at these bargain prices.

Prices	Per 50	Per 100
12 to 18 inch -----	\$1.25	\$2.00
18 to 24 inch -----	1.50	2.50
2 to 3 feet -----	2.50	4.00



Althea, Rose of Sharon

**ARONIA** (Chokeberry)—A perfectly hardy shrub with attractive sage green foliage, coloring to vivid red in fall. The small white flowers are followed by berries. Prefers a moist location. We can furnish both the *Arbutifolia*, with red berries, and the *Melanocarpa*, with black berries.

Prices	Each	10
18 to 24 inch -----	\$0.25	\$2.00
2 to 3 feet -----	.35	3.00

**MALLOW MARVELS** (*Hibiscus*)—An attractive perennial, growing 5 to 6 feet. Thrives in any soil, but prefers moist location. A very desirable plant where continuous bloom is wanted. Single flower.

Prices	Each	10
1 year transplanted, mixed colors --	\$0.15	\$1.00
2 year transplanted, mixed colors --	.25	2.00

**ARALIA PENTAPHYLLA**—Strong growing, makes a small tree in time. Abundant foliage of rich, glossy green. Grows in most difficult situations.

Prices	Each	10
18 to 24 inch -----	\$0.25	\$2.00
2 to 3 feet -----	.50	4.50

**NATIVE WILD AZALEA**—A large deciduous shrub with bright green foliage which assumes a rich shade of crimson in autumn. Flowers sweet scented, white tinged with rose. Thrives in almost any situation. Very showy and desirable.

Prices	Each	10
Clumps, 18 to 24 in., B&B -----	\$0.50	\$4.00
Clumps, 2 to 3 ft., B&B -----	.75	6.00

**BERBERIS THUNBERGI** (*Japanese Barberry*)—Dwarf growing, bushy and rounded in form, with small green leaves densely covering the thorny twigs. Scarlet or bronze in autumn, studded with crimson berries. Splendid for hedges or massing. Healthy, hardy and grows anywhere, in any soil.

	Each	10
12 to 18 inch -----	\$0.15	\$1.25
18 to 24 inch -----	.25	2.00
2 to 3 ft. -----	.40	3.50

**BERBERIS THUNBERGI ATROPURPUREA** (*Red Leaved Barberry*)—Popular for grouping, edging taller plantings and evergreens. Foliage is a rich, bronzy red, changing in autumn to more vivid hues of orange and red, with scarlet berries. Unequaled in coloring by any other shrub.

	Each	10
9 to 12 inch -----	\$0.15	\$1.25
12 to 18 inch -----	.20	1.75
18 to 24 inch -----	.35	3.00



Buddleia, Butterfly Bush



Japanese Barberry

**BUDDLEIA VARIABILIS MAGNIFICA** (*Butterfly Bush or Summer Lilac*)—Blooms continuously all summer. Long cylinder-like panicles of bloom, beautiful purple lilac in color, having a pleasing fragrance which attracts scores of butterflies.

	Each	10
18 to 24 inch -----	\$0.25	\$2.00
2 to 3 feet -----	.35	3.00
3 to 4 feet -----	.45	4.00

**CALLICARPA AMERICANA** (*Beautyberry*)—The berry-bearing plants are becoming more and more popular. Pink tinted blossoms appear in August, followed by clusters of purple berries, which make this shrub attractive in fall and winter.

	Each	10
18 to 24 inch -----	\$0.30	\$2.50
2 to 3 feet -----	.40	3.50
3 to 4 feet -----	.65	6.00

**CALYCANTHUS** (*Sweet Shrub*)—An old-fashioned shrub, that blooms intermittently all summer, and the odd, chocolate-colored flowers are spicily fragrant. The glossy green leaves and reddish-brown shoots give it a very striking appearance.

	Each	10
12 to 18 inch -----	\$0.20	\$1.50
18 to 24 inch -----	.35	3.00
2 to 3 feet -----	.50	4.00

**CLETHRA ALNIFOLIA** (*Sweet Pepperbush*)—A handsome dwarf shrub, sturdy and compact. Leaves dark green, fading to yellow tones; flowers creamy white and fragrant.

	Each	10
18 to 24 inch -----	\$0.50	\$4.00
2 to 3 feet -----	.75	6.00

**CORALBERRY** (*Red Snowberry*) *Symphoricarpus Vulgaris*—Graceful shrub; flowers light pink, followed by clusters of red berries which remain on the branches until late in the winter.

	Each	10
12 to 18 inch -----	\$0.20	\$1.50
18 to 24 inch -----	.25	2.00
2 to 3 feet -----	.40	3.00

**CORNUS** (*Shrub Dogwood*)—Valuable for brilliancy of bark and berries. All varieties do well in shade. The autumn fruits call in a welcome assemblage of birds; and the tangled mass of highly colored twigs enliven the somberness of winter.

**Amomum** (*Silky Dogwood*)—Has striking red bark. Small white flowers in June are followed by blue berries.

**Lutea** (*Yellow-twiggged Dogwood*)—Golden-yellow branches afford quite a contrast to the other varieties.

**Paniculata** (*Grey-stemmed Dogwood*)—Small white flowers, followed by white berries. Leaves are narrow and green, turning to a reddish purple in the fall.





Cornus Shrub Dogwood

**Sanguinea** (Red-twigged Dogwood)—Deep purplish red branches. Leaves dark green, paler beneath.  
**Siberica** (Coral Dogwood)—Branches bright red.  
**Stolonifera** (Red Ozier Dogwood)—Bright red bark and small white berries lasting into winter.

	Each	10
18 to 24 inch -----	\$0.20	\$1.50
2 to 3 feet -----	.35	3.00
3 to 4 feet -----	.50	4.00

**COTONEASTER ACUTIFOLIA** (Peking Coton-easter)—An attractive, beautifully formed shrub with thick, glossy leaves, turning to red in the fall. Small white flowers in early summer, followed by large black berries. Perfectly hardy; grows 8 to 10 feet.

	Each	10
18 to 24 inch -----	\$0.25	\$2.00
2 to 3 feet -----	.35	3.00

**GRAPE MYRTLE** (*Lagerstroemia*)—The most popular and most characteristic of Southern shrubs. Of upright, open habit, with small, dark green foliage and large clumps of beautiful lace-like flowers throughout the summer. We offer crimson, pink and white.



Deutzia Pride of Rochester

	Each	10
12 to 18 inch -----	\$0.30	\$2.50
18 to 24 inch -----	.40	3.50
2 to 3 feet -----	.50	4.50
3 to 4 feet -----	.75	6.00

**CYDONIA JAPONICA** (Japanese Quince)—One of the most brilliant flowering shrubs, covered with dazzling scarlet flowers very early in the spring. Bright green glossy leaves and spreading compact branches.

	Each	10
12 to 18 inch -----	\$0.30	\$2.50
18 to 24 inch -----	.50	4.00
2 to 3 feet -----	.80	7.00
3 to 4 feet -----	1.25	10.00



Crape Myrtle

**DEUTZIA**—One of the most desirable shrubs. Though varying in height and habit, they bloom alike in dainty bell-shaped flowers. Will thrive in almost any situation.

**Candidissima**—Upright growing; fine foliage and pure white double flowers.

**Crenata**—Covered in summer with light pink, fragrant flowers.

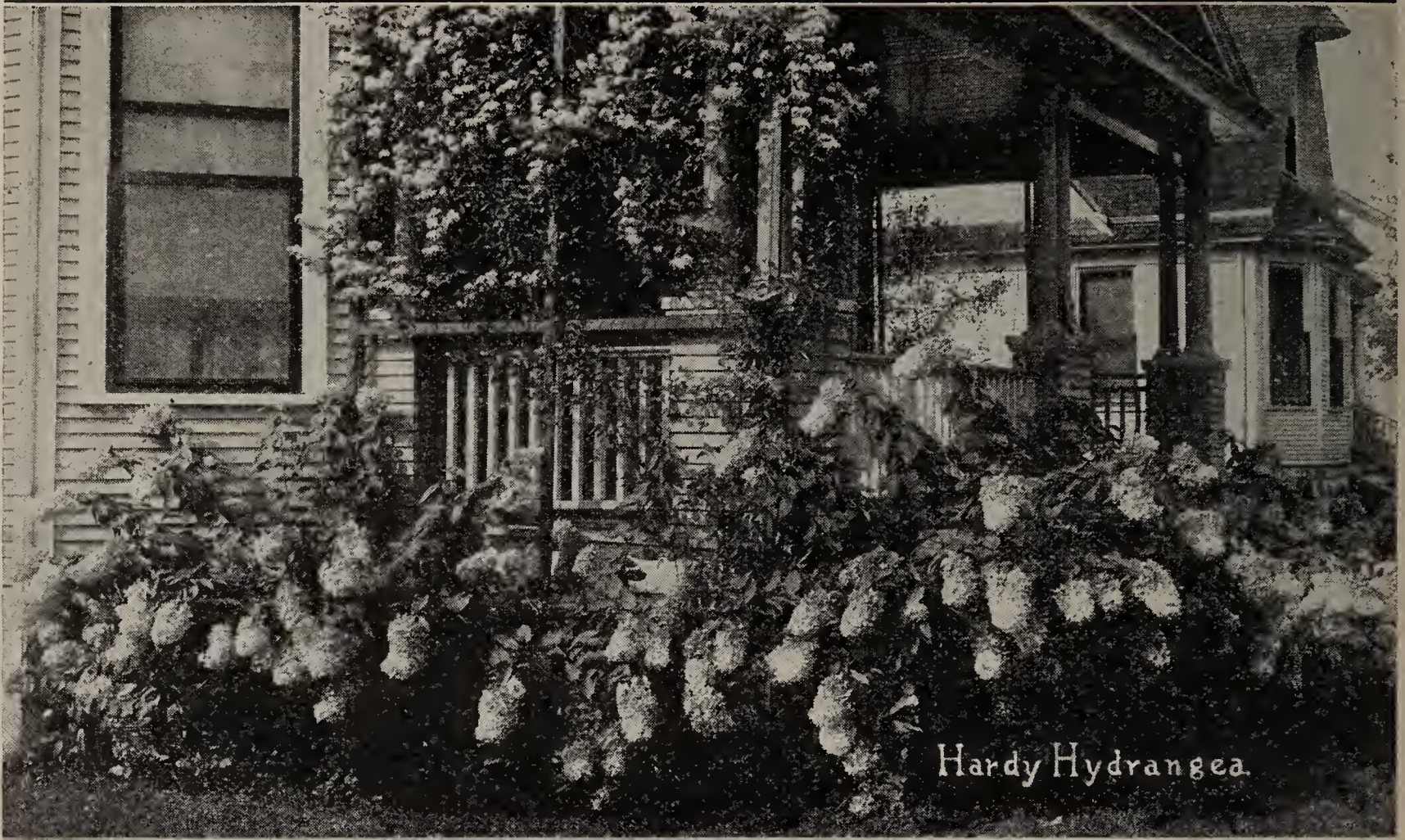
**Fortunei**—Erect branches with broad, dark-green leaves; pink flower.

**Pride of Rochester**—Blooms before any of the other varieties; large semi-double white flower with outer petals tinged with pink.

	Each	10
12 to 18 inch -----	\$0.20	\$1.50
18 to 24 inch -----	.30	2.50
2 to 3 feet -----	.40	3.50
3 to 4 feet -----	.50	4.00

**DEUTZIA GRACILIS**—Dwarf, slender-growing. The drooping branches are wreathed with pure white flowers in late spring.

	Each	10
15 to 18 inch branched -----	\$0.35	\$3.00
18 to 24 inch branched -----	.50	4.00



Hardy Hydrangea.

Hydrangea P. G. is Ideal for Foundation Planting

**ELDER (Sambucus)**—Tall and broad-growing berried shrubs largely used for their beautiful leaves, immense flower cymes, and showy fruits.

**Canadensis (American Elder)**—A tall showy shrub. Large flat clusters of white fragrant flowers, followed by luscious black fruits—the source of Mother's "Elderberry pie."

	Each	10
12 to 18 inch -----	\$0.20	\$1.50
18 to 24 inch -----	.30	2.00
2 to 3 feet -----	.40	3.50

**EUONYMUS ALATUS (Cork-bark Euonymus)**—Showy shrub, sometimes called "Winged Burning Bush." Corky winged branches; red and crimson leaves in autumn. Fine for solitary plantings or massing.

	Each	10
18 to 24 inch -----	\$0.35	\$3.00
2 to 3 feet -----	.50	4.00

**EUONYMUS AMERICANUS (Strawberry Bush)**—An upright shrub, with attractive foliage and reddish flowers. The rich pink fruits are concealed in scarlet pods, very showy.

	Each	10
18 to 24 inch -----	\$0.20	\$1.50
2 to 3 feet -----	.35	3.00

**EXOCHORDA GRANDIFLORA (Pearl Bush)**—A beautiful Chinese shrub with sprays of star-shaped, pure white flowers in May and good foliage throughout the season. Early buds look like pearls.

	Each	10
18 to 24 inch -----	\$0.30	\$2.50
2 to 3 feet -----	.45	4.00
3 to 4 feet -----	.60	5.00

**FORSYTHIAS (Golden Bell)**—Somehow the Forsythias tell us spring is here more than any other of the blooming shrubs, for the delicate yellow flowers definitely belong to that season and no other. They are beautiful when planted against a background of evergreens, or when used in a group.

**Fortunei**—Dark green foliage; golden-yellow flowers.

**Intermedia**—Slender, arching branches; vigorous grower. Bright yellow blossoms.

**Suspensa**—Long curving branches covered with golden yellow flowers in the spring.

**Viridissima**—More bushy shrub than other varieties. Foliage rich green, and it blooms somewhat later than others.

Prices all varieties	Each	10
18 to 24 inch -----	\$0.25	\$2.00
2 to 3 feet -----	.30	2.50
3 to 4 feet -----	.40	3.50

**HYDRANGAEA ARBORESCENS (Common Wild Hydrangea)**—Similar to the Arborescens Grandiflora, only that the clusters of white flowers are smaller. Very hardy.

	Each	10
18 to 24 inch, transplanted -----	\$0.25	\$2.00
2 to 3 feet, transplanted -----	.30	2.50
3 to 4 feet, transplanted -----	.40	3.50



Forsythia Golden Bell

**HYDRANGEA ARBORESCENS GRANDIFLORA** (Hills of Snow)—A beautiful and very showy shrub. Large white blossoms, resembling the common snowball, but larger. Very decorative in a border.

	Each	10	
12 to 18 inch, transplanted	-----	\$0.25	\$2.00
18 to 24 inch, transplanted	-----	.35	3.00
2 to 3 feet, transplanted	-----	.45	4.00

**HYDRANGEA PANICULATA GRANDIFLORA** (Pee-Gee)—One of the most popular of all shrubs, with its broad, pyramidal panicles of flowers. Creamy white, turning in the late summer to pink.

	Each	10	
12 to 18 inch, transplanted	-----	\$0.25	\$2.00
18 to 24 inch, transplanted	-----	.35	3.00
2 to 3 feet, transplanted	-----	.45	4.00

**OAK LEAF HYDRANGEA** (Quercifolia)—The foliage is similar to an oak leaf, rich deep green in summer and claret color in the fall. Large clusters of pure white flowers in mid-summer.

	Each	10	
18 to 24 inch	-----	\$0.35	\$3.00
2 to 3 feet	-----	.45	4.00
3 to 4 feet	-----	.60	5.00

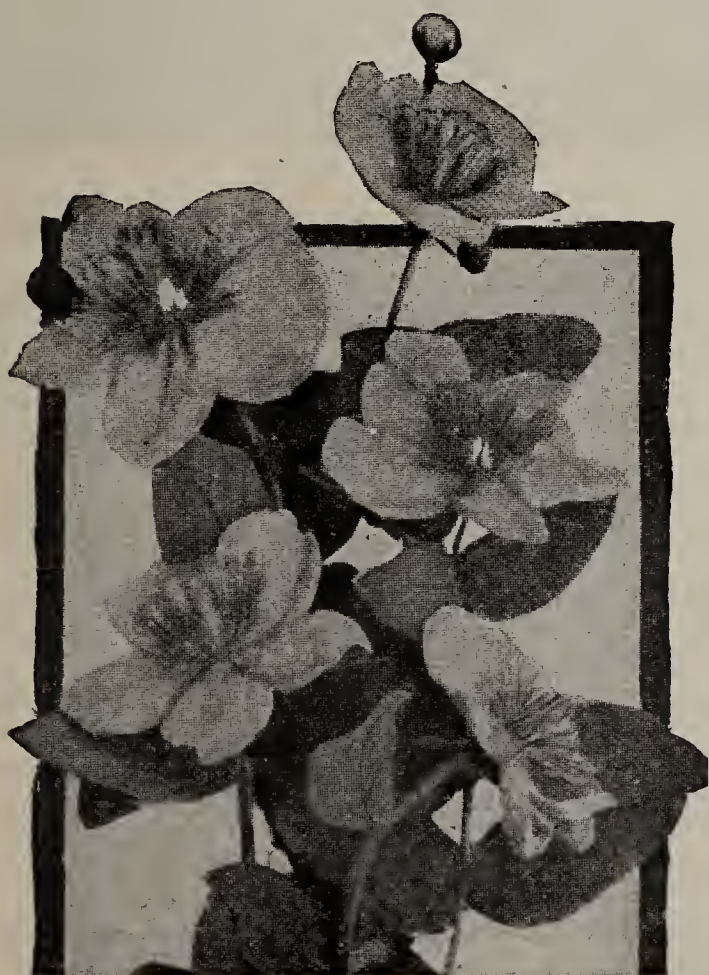
**HYPERICUM**

**DENSIFLORUM** (Dense-flowered St. John's Wort) — A handsome shrub with numerous branches, attaining a height of 3 to 5 feet. Leaves narrow, dark green, usually with clusters of smaller leaves in their axils. Flowers very numerous in compound clusters, bright yellow. Very pleasing.

	Each	10	
18 to 24 inch	-----	\$0.25	\$2.00
2 to 3 feet	-----	.35	3.00

**PROLIFICUM** (Shrubby St. John's Wort)—A bushy, low growing shrub with many flowers in midsummer. Useful in border or where low growth is wanted. It grows well in rocky or in sandy soil. It is 2 to 3 feet in height at maturity.

	Each	10	
12 to 18 inch	-----	\$0.20	\$1.50
18 to 24 inch	-----	.30	2.50
2 to 3 feet	-----	.40	3.50



Hypericum



Hydrangea, A. G.

**ILEX VERTICILLATA**—Deciduous Holly (Black Alder or Winterberry)—A hardy shrub with showy bright berries, which persist on the naked branches until mid-winter. Thrives in almost any moist soil.

	Each	10	
18 to 24 inch	-----	\$0.35	\$3.00
2 to 3 feet	-----	.50	4.00

**JASMINUM** (Jasmine Officinale)—A graceful, vine-like shrub. The small dark glossy leaves and fragrant star-shaped flowers make a pleasing effect.

	Each	10	
One year plants	-----	\$0.25	\$2.00
Two year plants	-----	.40	3.50

**KERRIA JAPONICA**—Graceful, slender, drooping branches, covered with a wealth of rich, double, yellow flowers in June. Effective for massing, branches remain green all winter.

	Each	10	
18 to 24 inch	-----	\$0.25	\$2.00
2 to 3 feet	-----	.35	3.00

**KERRIA WHITE** (Rhodotypos Kerrioides)—A fine shrub for the shady spots around the house. Its foliage is unusually attractive, sharp notches and deep veins giving it a plaited effect. Showy white flowers in May and June, followed by jet black berries.

	Each	10	
12 to 18 inch	-----	\$0.20	\$1.50
18 to 24 inch	-----	.30	2.00
2 to 3 feet	-----	.40	3.00

Mr. F. C. Boyd, Warm Springs, Ga.  
Boyd Nursery Company, December 4, 1931  
McMinnville, Tenn.

Dear Mr. Boyd:

Thank you for your letter.

I think I can take between four and five thousand Tulip Poplars next April as I am cleaning off and draining a swamp lot.

Will you drop me a line to Albany, N. Y., about the 15th of March and I shall then give you the date and shipping directions.

The Tulip Poplars which I got from you many years ago have done splendidly and some of them are now between forty and fifty feet high.

Sincerely yours,  
Franklin D. Roosevelt.



Bush Honeysuckle

**LINDERA** (Benzoin Aestivalis—Spice Bush)—Excellent for planting along the edge of water. Bright yellow flowers in early spring before the leaves appear. In the fall the plant is covered with scarlet berries, when the leaves turn to bright yellow.

	Each	10
12 to 18 inch -----	\$0.25	\$2.00
18 to 24 inch -----	.35	3.00
2 to 3 feet -----	.45	4.00

**LILACS**—Best loved of all the old-time garden shrubs, whose flowers never fail to charm with their delicate beauty nor refresh with their tender fragrance.

**Purple**—The well-known old garden favorite.

**White**—The same with pure white blooms.

**Rothomagensis**—Strong, vigorous growth; deep reddish-lilac flowers borne in long, loose panicles.

Prices on above:	Each	10
18 to 24 inch -----	\$0.25	\$2.00
2 to 3 feet -----	.35	3.00
3 to 4 feet -----	.40	3.50

**FRENCH LILACS**

**Edouard Andre**—Double rosy purple.

**Jacques Calot**—Double reddish violet.

**Michel Buchner**—Double pale lilac.

**Mme. Casimir Perier**—Double white.

Prices on above:	Each	10
18 to 24 inch -----	\$0.40	\$3.50
2 to 3 feet -----	.50	4.50



California Privet

**LONICERAS** (Bush Honeysuckle)—The fragrant flowers, showy fruits and beautiful green foliage of this group have made them one of the most popular of the ornamental shrubs. They are hardy and easy to transplant.

**Bella Albida**—White flowers, followed by scarlet berries.

**Fragrantissima**—Earliest to bloom; flowers pale pink, very fragrant.

**Morrowi**—Creamy-white flowers, followed by bright red berries.

**Tatarica Pink**—Early blooming. Bears a profusion of pink flowers.

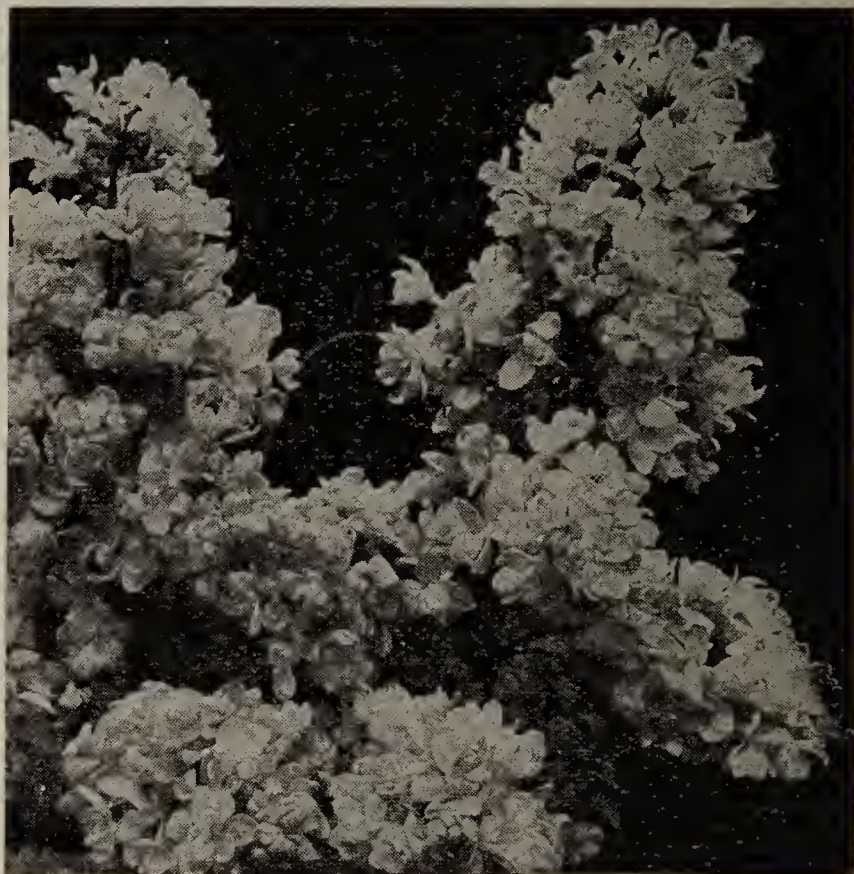
**Tatarica Alba**—White flowering, very showy.

**Tatarica Rubra**—Deep shade of pink.

Prices all varieties:	Each	10
18 to 24 inch -----	\$0.25	\$2.00
2 to 3 feet -----	.30	2.50
3 to 4 feet -----	.40	3.50

**BETCHEL'S FLOWERING CRAB** (Malus Ioenis Bechtell)—A small tree. The beautiful, double pink blossoms, that are borne in great quantities, resemble small roses, and are very fragrant.

	Each	10
2 to 3 feet -----	\$0.40	\$3.50
3 to 4 feet -----	.50	4.50



French Lilacs

**PRIVET - HEDGE PLANTS**

With the hedge comes the delicate touch of privacy that stamps a home as really your very own; it borders the picture and frames it artistically, without shutting off the lovely views.

Plant a hedge fence. It will cost you less than the cheapest fence you can build; it will outwear the best fence you can build; it will look better than any fence you can build.

We are large growers of hedge plants, and are thereby enabled to make the following very low prices:

**AMUR RIVER NORTH**—This variety is very hardy and is widely used in the North. It makes fine, dense hedges.

	Each	10	100
12 to 18 inch, branched --	\$0.10	\$0.80	\$3.50
18 to 24 inch, branched --	.12	1.00	5.00
2 to 3 feet, branched --	.15	1.25	7.00

**AMUR RIVER SOUTH**—Southern evergreen privet. Most popular evergreen plant in the South. Rich green foliage, compact growth. Makes a good hedge in one year.

	Each	10	100
12 to 18 in., 2 yr. branched --	\$0.08	\$0.60	\$2.50
18 to 24 in., 2 yr. branched --	.10	.80	3.50
2 to 3 ft., 2 yr. branched --	.12	1.00	5.00
3 to 4 ft., 2 yr. branched --	.15	1.25	7.00



Philadelphus (Mock Orange)

**CALIFORNIA**—Thick glossy green foliage, nearly evergreen. It makes a good hedge, or is good planted as single specimens.

	Each	10	100
12 to 18 inch, branched	---\$0.05	\$0.40	\$2.50
18 to 24 inch, branched	--- .08	.60	3.50
2 to 3 feet, branched	--- .10	.80	5.00
3 to 4 feet, branched	--- .15	1.25	7.00

**IBOTA**—A Japanese variety of the most beautiful character. Valuable for specimen plants or hedges. Numerous nodding clusters of white flowers, followed by black berries.

	Each	10	100
12 to 18 inch, branched	---\$0.10	\$0.80	\$3.50
18 to 24 inch, branched	--- .12	1.00	5.00
2 to 3 feet, branched	--- .15	1.25	6.00
3 to 4 feet, branched,			
heavy Ibota privet	----- .20	1.50	8.00

**PHILADELPHUS (Mock Orange)**—The popularity of this old-fashioned shrub has been largely on account of the creamy-white, fragrant flowers. Tall growing, makes a splendid screen.

**Coronarius**—Small, single flowers of delicious fragrance.

**Gordonianus**—Large, white flowers, that appear later than others.

**Grandiflorus**—Flowers large and white. Foliage very showy.

**Mont Blanc**—Dwarf in habit. Large, fragrant blooms make it very popular.

**Nivalis**—Very strong grower. Large, single white flowers.

Prices all varieties:	Each	10
12 to 18 inch	-----\$0.15	\$1.00
18 to 24 inch	----- .25	2.00
2 to 3 feet	----- .35	3.00
3 to 4 feet	----- .45	4.00

**PHILADELPHUS VIRGINAL**—A magnificent new variety. Vigorous and tall in growth, it is absolutely hardy and dependable to produce an amaz-

ing profusion of flowers year after year. A cluster of these beautiful, fragrant flowers resembles a bride's bouquet of orange blossoms.

	Each	10
18 to 24 inch	-----\$0.25	\$2.00
2 to 3 feet	----- .35	3.00
3 to 4 feet	----- .45	4.00

**PRUNUS PERSICA (Double Flowering Peach)**—

Grows to a small tree, and during March is covered with a mass of beautifully formed flowers. We can supply red, white and pink.

	Each	10
2 to 3 feet	-----\$0.60	\$5.00
3 to 4 feet	----- .75	6.00



Double Flowering Peach



Fern-Leaved Staghorn Sumac

**PRUNUS FISSARDI (Purple Leaf Plum)** — In spring this little tree has masses of rose-pink flowers with pink-purple leaves; later it is hung with wine-red fruits.

	Each	10
2 to 3 feet -----	\$0.35	\$3.00
3 to 4 feet -----	.45	4.00

**PRUNUS TRILOBA (Double Flowering Plum)**—Early flowering ornamental shrub, bearing double flowers of a delicate pink shade, which are produced in enormous quantities along the slender branches.

	Each	10
2 to 3 feet -----	\$0.75	\$7.00
3 to 4 feet -----	1.00	8.00

**RHUS (Sumac)**—Picturesque, gnarly, wind-bent rows of Sumac blazing in autumn with red leaves and gorgeous fruits, are familiar. Use of Sumac in modern landscaping gives the same effects in home grounds.



Spirea Anthony Waterer

**Aromatica (Fragrant Sumac)**—A short-branched shrub, with striking leaves and yellow flowers in clusters along the stems. Bright red berries in fall.

	Each	10
18 to 24 inch, branched -----	\$0.25	\$2.00
2 to 3 feet, branched -----	.35	3.00
3 to 4 feet, branched -----	.50	4.00

**Copallina (Shining Sumac)**—Very ornamental and useful for mass planting, because of the lustrous green foliage, which turns to rich crimson in the fall. The birds feed on the clusters of berries until late in the winter.

	Each	10
18 to 24 inch -----	\$0.15	\$1.00
2 to 3 feet -----	.20	1.50
3 to 4 feet -----	.25	2.00

**Cotinus (Purple Fringe)**—Often called the Smoke Tree on account of the mass of misty, purplish flowers that cover the entire bush and make it look like a great mass of smoke.

	Each	10
18 to 24 inch -----	\$0.25	\$2.00
2 to 3 feet -----	.30	2.50
3 to 4 feet -----	.40	3.50

**Glabra (Smooth Sumac)**—Striking foliage, topped in the fall by great spikes of crimson seeds, very ornamental in effect. Fine autumn coloring; good on rocky or poor soil; grows to a small tree.

	Each	10
2 to 3 feet -----	\$0.20	\$1.50
3 to 4 feet -----	.25	2.00
4 to 5 feet -----	.35	3.00
5 to 6 feet -----	.50	4.00

**Typhina (Staghorn Sumac)**—Grows in irregular bush form up to 10 feet and is very good for grouping. The leaves are large and bright green, but become brilliantly colored in the fall.

	Each	10
2 to 3 feet -----	\$0.20	\$1.50
3 to 4 feet -----	.30	2.50
4 to 5 feet -----	.40	3.50
5 to 6 feet -----	.60	5.00

**ROBINIA HISPIDA (Moss Locust)**—Foliage resembles the Black Locust, but the mass of long, graceful, deep rose-pink flowers make it most attractive. A dwarf bush that sprawls upon the ground, rarely growing taller than 2 to 3 feet.

	Each	10
12 to 18 inch -----	\$0.20	\$1.50
18 to 24 inch -----	.25	2.00
2 to 3 feet -----	.35	3.00

**SPIREA**—All the Spireas bloom with a riotous extravagance; style, color and habits of growth differing markedly. There is truly a Spirea for every place. We list below the different varieties, which we guarantee will keep flowers in your garden from early spring until late fall.



Plant Sumac for Gorgeous Autumn Colors



Spirea Van Houttei in Foundation Planting

**Thunbergi**—Forms a dense fluffy bush with feathery foliage, and small star-like flowers in such profusion that in early spring the plant looks like a mass of snow. In the fall, foliage changes to bright red and orange.

	Each	10
18 to 24 inch -----	\$0.30	\$2.50
2 to 3 feet -----	.35	3.00
3 to 4 feet, heavy -----	.45	4.00

**Prunifolia (True Bridal Wreath)**—Of strong irregular growth, with small round shining leaves coloring in autumn, and diminutive, very double, rose-like flowers in great abundance in May.

	Each	10
18 to 24 inch -----	\$0.25	\$2.00
2 to 3 feet -----	.35	3.00
3 to 4 feet -----	.50	4.00



Spirea Prunifolia, Bridal Wreath

**Van Houttei**—Probably the most beautiful of the Spireas, and one of the most popular of all shrubs. Blooms early in the spring. Plant throws out long branches that curve and droop to the ground weighted with a mass of pure white flowers. May be planted as specimens or in masses; makes a beautiful hedge. It is very hardy and thrives in all climates and all kinds of soil.

Special Prices on Van Houttei

	Each	10	100
12 to 18 in., branched ---	\$0.10	\$0.75	\$4.00
18 to 24 in., branched ---	.15	1.00	6.00
2 to 3 ft., branched ---	.20	1.50	8.00
3 to 4 ft., branched ---	.25	2.00	15.00
4 to 5 ft., branched heavy -----	.35	3.00	20.00

**Opulifolia**—A good, vigorous shrub, easily grown. Creamy-white flowers in June, turning to dark red. A striking variety of colors.

	Each	10
18 to 24 inch -----	\$0.25	\$2.00
2 to 3 feet -----	.30	2.50
3 to 4 feet -----	.40	3.50

**Billardi**—A strong grower, with dull green foliage, and long cone-shaped flowers of pink and white, that are very attractive for cut flowers. State color of flower wanted.

	Each	10
18 to 24 inch -----	\$0.20	\$1.50
2 to 3 feet -----	.30	2.50
3 to 4 feet -----	.40	3.50

**Anthony Waterer**—Low-growing, very bushy plant that bears small heads of bright crimson flowers. Valuable for planting with taller shrubs.

	Each	10
12 to 18 inch -----	\$0.20	\$1.50
18 to 24 inch -----	.30	2.50
2 to 3 feet -----	.45	4.00

**Callosa**—Dense, low growing bushes, 3 to 4 feet high, with flowers in small flat heads appearing in July and August. We offer two varieties of the Callosa. Alba, White and Rosea, Pink. Please state color wanted when making up your order.

	Each	10
18 to 24 inch -----	\$0.25	\$2.00
2 to 3 feet -----	.35	3.00
3 to 4 feet -----	.50	4.00

**Douglasi**—Flowers deep rose color. One of the best Spireas. The blossoms are large spikes and very attractive, appearing in late summer.

	Each	10
18 to 24 inch -----	\$0.20	\$1.75
2 to 3 feet -----	.30	2.50
3 to 4 feet -----	.50	4.00



White Snowberry

**STEPHANANDRA FLEXUOSA**—An attractive 3 foot shrub, especially suitable for borders of other shrubs and for rocky banks. Branches angular, even zig-zagged, with handsome lobed leaves, which turn to purplish red. Attractive white flowers in June.

	Each	10
Two year plants -----	\$0.40	\$3.50
Three year plants, clumps -----	.60	5.00

**STYRAX JAPONICA**—An exceedingly desirable small tree or shrub. Practically covered in June with fragrant racemes of white flowers. A plant desirable for individual or group plantings.

	Each	10
2 to 3 feet -----	\$0.25	\$2.00
3 to 4 feet -----	.40	3.50
4 to 6 feet -----	.75	6.00

**WHITE SNOWBERRY (Symphoricarpus Racemosus)**—Inconspicuous, rose-colored flowers in June and July, followed by large, round, clustered, milk-white fruits. The combination of pink flowers and white berries on the same twig is charming. Foliage fresh, glaucous green.

	Each	10
18 to 24 inch -----	\$0.30	\$2.50
2 to 3 feet -----	.40	3.50

**STUARTIA PENTAGYNA**—A shrub with spreading branches, usually growing 5 to 10 feet tall. Leaves are bright green in spring and summer, fading with glowing colors. Flowers white, with wavy rose-bordered petals and golden anthers, opening in summer.

	Each	10
12 to 18 inch -----	\$0.20	\$1.50
18 to 24 inch -----	.30	2.50
2 to 3 feet -----	.40	3.50

**TAMARIX**—An irregular spreading tree-like shrub, growing 6 to 10 feet tall, with fine feathery fo-



Japanese Snowball

liage. In early summer it is covered with clouds of small, pink flowers, presenting a very beautiful appearance.

	Each	10
18 to 24 inch -----	\$0.25	\$2.00
2 to 3 feet -----	.35	3.00

**VIBURNUM SNOWBALL**

This family includes the famous Snowballs. They are all hardy and have unusually rich, glossy, abundant leaves and are especially free from attacks of injurious insects. They are valuable in landscape work and mass planting in borders and groups. Most of these varieties will grow satisfactorily in shaded places, but, of course, will do better in open sunlight. Beautiful autumnal coloring heightens the attractiveness of the leaves of some varieties, while others have the added beauty of ornamental berries. We offer the following varieties.



Tamarix

**DENTATUM (Arrow-Wood)**—Bright green, heart-shaped leaves that turn to red and purple. The flowers, borne in May and June, are creamy white. Grows from 8 to 12 feet.

	Each	10
18 to 24 inch -----	\$0.25	\$2.00
2 to 3 feet -----	.40	3.50
3 to 4 feet -----	.60	5.00

Boyd Nursery Company

Nov. 8, 1934

McMinnville, Tenn.

Gentlemen:

We are pleased to advise that the shipment of Dogwood arrived this morning in very good condition and sincerely appreciate your prompt handling of this order.

We were under the impression that your stocks were dug and stored in the heel bed and that you could make immediate shipment. You did, in so far as practical anyway, didn't you?

Thanking you again for the prompt service and with best wishes, we are

Very respectfully,

H. G. Hastings Co.





Snowball

**HIGH BUSH CRANBERRY** (*Viburnum Opulus*)—  
Very ornamental. Berries resembling small cranberries, hang until destroyed by frost late in fall.

	Each	10
12 to 18 inch -----	\$0.25	\$2.00
18 to 24 inch -----	.35	3.00
2 to 3 feet -----	.45	4.00

**COMMON SNOWBALL** (*Viburnum Opulus Sterile*)—A fine, old-time favorite. Free growing, easy culture. Covered with balls of snow white flowers in early spring.

	Each	10
12 to 18 inch -----	\$0.25	\$2.00
18 to 24 inch -----	.30	2.50
2 to 3 feet -----	.40	3.50

**JAPANESE SNOWBALL** (*Viburnum Plicatum*)—  
Foliage a handsome olive-green; flowers are larger than the Common Snowball; borne in dense heads; very ornamental.

	Each	10
12 to 18 inch -----	\$0.35	\$3.00
18 to 24 inch -----	.45	4.00
2 to 3 feet -----	.65	6.00

**VITEX** (Chaste or Lavender Tree)—Flowers and foliage noted for the distinctive lavender fragrance. Stands much abuse. Flowers from May until July, with some flowers appearing even up to frost.

	Each	10
18 to 24 inch -----	\$0.25	\$2.00
2 to 3 feet -----	.35	3.00
3 to 4 feet -----	.50	4.00

Plant liberally of shrubs and other ornamentals. If you are in doubt about your selection or the proper varieties for your particular location, ask for our advice. We want to help you.

**WEIGELA** (*Diervilla*)—Thrifty shrubs, very desirable for the border or for grouping, and also as specimen plants for the lawn. The showy flowers are stemless bells strung along the arching canes in clustered confusion.

**Amabilis**—Grows to about 6 feet, with rich, dark green leaves and very attractive, rose-colored flowers.

**Desboisi**—The flowers are deep rose-colored. One of the best.

**Hendersoni**—One of the strongest growing Weigelas, with large flowers of deep rose color.

**Madame Lemoine**—One of the very prettiest. Flowers blush changing to deep pink.

**Rosea**—Best known and most popular variety. Deep pink blossoms, which are borne in wonderful profusion and make a great show in June.

Prices above varieties:	Each	10
12 to 18 inch -----	\$0.20	\$1.50
18 to 24 inch -----	.25	2.00
2 to 3 feet -----	.30	2.50
3 to 4 feet -----	.40	3.50

**EVA RATHKE WEIGELA**—Flowers deep carmine red. Very distinct and attractive variety.

**VARIEGATED LEAF WEIGELA**—Leaves bordered with yellowish-white, making the bush very conspicuous.

	Each	10
12 to 18 inch -----	\$0.30	\$2.50
18 to 24 inch -----	.40	3.50
2 to 3 feet -----	.50	4.50



Weigela Rosea



## Plant More Trees for Shade and Beauty

Nowhere are more beautiful or desirable trees to be found than the grand old specimens of our American forests. If you want to add greatly to the permanent value of your place, plant shade trees. Like every other good thing, they take time to grow, but they will repay you a thousand times for the time you wait, in grateful shade in summer and glorious autumn colors. We list all the old favorites that you know so well and also many other trees that you may not be so familiar with.

In our nurseries we grow specimen trees for immediate effect. Their roots have been pruned as they grow to develop a compact root system. This enables the trees to keep right on growing when they are moved. A good planting of trees will fairly "make a place."

**SILVER MAPLE** (*Acer Dasycarpum*)—A very quick-growing shade tree. Foliage light green above and silvery beneath. Will grow under most all conditions.

	Each	10
4 to 5 feet -----	\$0.20	\$1.75
5 to 6 feet -----	.30	2.50
6 to 8 feet -----	.45	4.00
8 to 10 feet -----	.75	6.50
10 to 12 feet -----	1.00	9.00

**SCHWEDLER MAPLE** (*Platanoides Schwedleri*)—A handsome lawn tree, developing the rounded, dense head of the Norway Maple. Brilliant, purplish red leaves in the spring make a rich contrast with the vivid greens of surrounding nature; gradually the highly colored leaves soften to bronze, then to waxy green, and late in the fall are deep yellow.

	Each	10
6 to 7 feet -----	\$1.75	\$15.00
7 to 9 feet -----	2.50	20.00

**NORWAY MAPLE** (*Platanoides*)—Very popular variety for either lawn or street planting. Forms a perfect rounded head, with large, deep green foliage. Easily transplanted.

	Each	10
3 to 4 feet -----	\$0.50	\$4.00
4 to 5 feet -----	.75	6.50
5 to 6 feet -----	1.00	9.00
6 to 8 feet -----	1.40	12.00

**SCARLET, OR RED MAPLE** (*Acer Rubrum*)—Also called Swamp Maple. A long-lived, hardy tree of upright growth. Scarlet flowers in early spring; dense foliage turning to gorgeous colors in autumn.

	Each	10
4 to 5 feet -----	\$0.40	\$3.50
5 to 6 feet -----	.60	5.00
6 to 8 feet -----	.85	7.50
8 to 10 feet -----	1.25	10.00
10 to 12 feet -----	1.50	12.50

**SUGAR MAPLE** (*Acer Saccharum*)—Known also as Hard Maple. It is adapted to rocky, gravelly soil. Leaves come out early, and in late summer turn to brilliant colors. The delicious Maple Sugar is made from the sap of these trees.

	Each	10
4 to 5 feet -----	\$0.40	\$3.50
5 to 6 feet -----	.60	5.00
6 to 8 feet -----	.85	7.50
8 to 10 feet -----	1.25	10.00
10 to 12 feet -----	1.50	12.50



Norway Maple

**AESCULUS NEGLECTA**—Dwarf Buckeye, rarely over 20 feet in height. Dark leaves and splendid showy red flower-spikes opening later.

	Each	10
18 to 24 inch -----	\$0.25	\$2.00
2 to 3 feet -----	.35	3.00

**AESCULUS OCTANDRA** (Horse-Chestnut) — Often called the Yellow Buckeye. A large tree of slow growth and very attractive in its roundish form. Flowers in May.

	Each	10
18 to 24 inch -----	\$0.25	\$2.00
2 to 3 feet -----	.35	3.00
3 to 4 feet -----	.50	4.50

**AILANTHUS** (Tree of Heaven)—A native of Japan. A rapid growing tree with feathery tropical foliage. Will thrive in poor soil. Excellent for city planting, as it stands smoke and dust well.

	Each	10
3 to 4 feet -----	\$0.35	\$3.00
4 to 5 feet -----	.40	3.50
5 to 6 feet -----	.60	5.00

**AMELANCHIER** (Serviceberry)—A great profusion of white flowers early in spring, followed by small purple fruit ripe in July. One of the best flowering trees.

	Each	10
3 to 4 feet -----	\$0.65	\$6.00
4 to 6 feet -----	.90	8.00

**ANDROMEDA ARBOREUM** (Sour Wood)—A bushy tree that bears quantities of small white flowers, but its best feature is the foliage that turns to scarlet in the fall.

	Each	10
18 to 24 inch -----	\$0.30	\$2.50
2 to 3 feet -----	.45	3.50
3 to 4 feet -----	.60	5.00



Horse Chestnut

**AMERICAN ASH** (*Fraxinus Americana*)—Very graceful tall-growing tree. Bark is light gray; foliage turning to gold and purple in autumn. A long lived tree that does not require pruning.

	Each	10
4 to 6 feet -----	\$0.65	\$6.00
6 to 8 feet -----	.85	7.50
8 to 10 feet -----	1.00	9.00

**EXCELSIOR** (European Mountain Ash)—A lofty tree of rapid growth and spreading head. The bark is gray, but foliage darker than the American ash.

	Each	10
4 to 6 feet -----	\$1.00	\$8.00
6 to 8 feet -----	1.50	12.50

**AMERICAN LINDEN** (*Tilia Americana*)—Suitable for parks or lawns. Intensely fragrant yellow flowers, and broad top which gives plenty of shade.

	Each	10
3 to 4 feet -----	\$0.50	\$4.00
4 to 6 feet -----	.75	6.00
6 to 8 feet -----	1.25	10.00

**AMERICAN BEECH** (*Fagus Americana*)—This tree makes a fine winter display on account of its smooth, light gray bark, but is much better in spring, when veiled by the tender green leaves. The nuts have a fine flavor, and are borne in abundance.

	Each	10
4 to 5 feet -----	\$0.50	\$4.50
5 to 6 feet -----	.75	6.00
6 to 8 feet -----	1.00	9.00
8 to 10 feet -----	1.50	12.50

**WHITE BIRCH** (*Alba*)—A medium-sized tree, with grayish green foliage and slender branches. As the tree grows older the bark becomes whiter.

	Each	10
5 to 6 feet -----	\$0.75	\$6.50
6 to 8 feet -----	1.00	9.00
8 to 10 feet -----	1.50	12.50

**CUT LEAF WEEPING BIRCH** (*Alba Pendula*).—Most remarkable and beautiful tree for the lawn. Foliage deep cut; silvery white bark at maturity.

	Each	10
6 to 8 feet -----	\$2.00	\$15.00
8 to 10 feet -----	2.50	20.00



American Ash



White Birch

**RIVER BIRCH (Nigra)**—This variety, with the ragged or torn bark, is found along the banks of streams. A graceful, moisture-loving tree. Leaves are dark green, turning to dull yellow in fall.

	Each	10
4 to 5 feet -----	\$0.50	\$4.00
5 to 6 feet -----	.75	6.00
6 to 8 feet -----	1.00	8.00
8 to 10 feet -----	1.50	12.50

**CARPINUS CAROLINIANA (American Hornbeam)**—Slow-growing, hardy tree, resembling the Beech. Useful for screens and hedges. Scarlet foliage in winter.



Weeping Birch

	Each	10
4 to 6 feet -----	\$0.60	\$5.00
6 to 8 feet -----	1.00	9.00
8 to 10 feet -----	1.50	12.50

**CATALPA BUNGEI (Umbrella Catalpa)**—A dwarf, round-headed tree, used for producing formal effects. The head can be kept compact by trimming.

	Each	10
5 to 6 ft., 1 yr. heads -----	\$1.00	\$8.00
6 to 8 ft., 2 yr. heads -----	1.50	12.50

**CERCIS CANADENSIS (Red Bud)**—One of the finest ornamental trees we offer. Medium size, with heart-shaped, leathery dark green foliage. A profusion of rose-pink flowers cover the branches early in spring, before the foliage appears.

	Each	10
3 to 4 feet -----	\$0.35	\$3.00
4 to 5 feet -----	.50	4.00
5 to 6 feet -----	.75	6.50
6 to 8 feet -----	1.25	10.00
8 to 10 feet -----	1.50	

**WHITE FRINGE TREE (Chionathus Virginica)**—Very attractive as a specimen or in groups with other tall shrubs. Pure white flowers in long, fringe-like effect in early April.

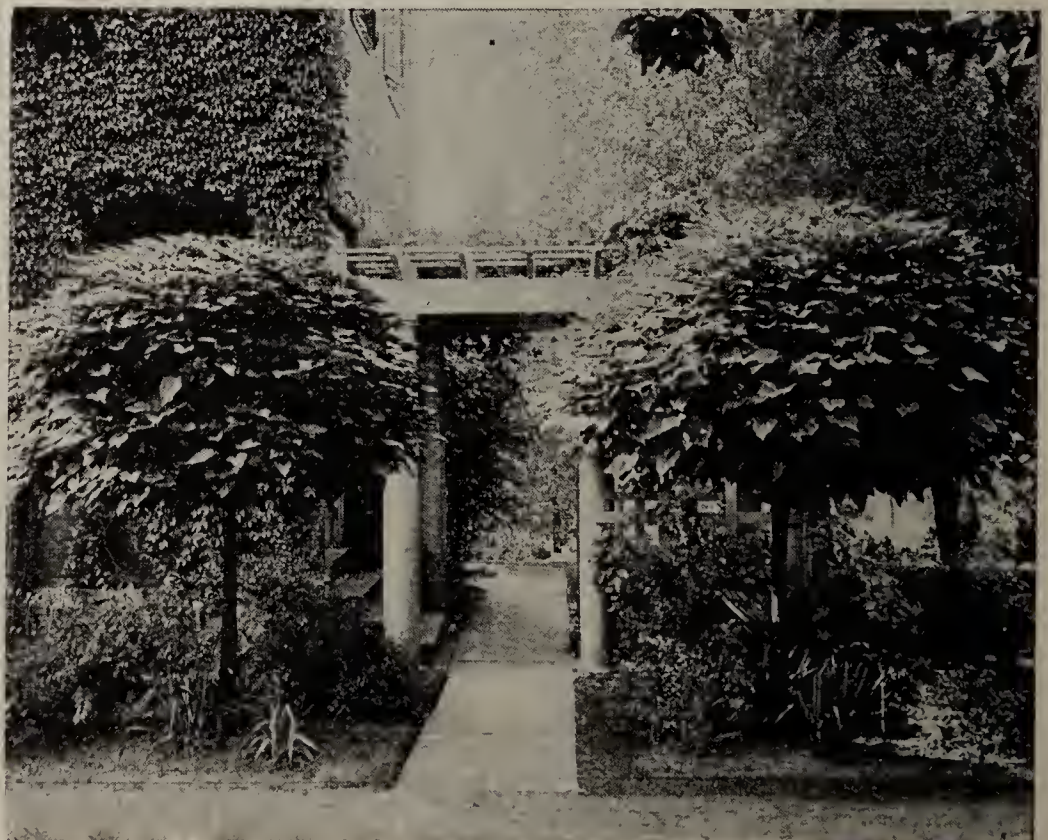
	Each	10
18 to 24 inch -----	\$0.35	\$3.00
2 to 3 feet -----	.45	4.00
3 to 4 feet -----	.60	5.00

**CLADRASTIS LUTEA (Yellow Wood)**—A pretty low tree with small egg-shaped leaflets and white flowers in graceful, drooping branches. Very slow growth.

	Each	10
2 to 3 feet -----	\$0.35	\$3.00
3 to 4 feet -----	.45	4.00
4 to 5 feet -----	.60	5.00

**CORNUS FLORIDA (White Flowering Dogwood)**—A tree that is a source of beauty and pleasure the entire year round. In spring the snowy white flowers appear before the foliage; the foliage is handsome during the summer, and the red berries are one of autumn's chiefest charm.

	Each	10
3 to 4 feet -----	\$0.35	\$3.00
4 to 5 feet -----	.50	4.00
5 to 6 feet -----	.75	6.00
6 to 8 feet -----	1.00	8.00



Catalpa Bungei

**CORNUS FLORIDA RUBRA** (Pink Flowering Dogwood)—A rare and beautiful variety. Blossoms are rose-pink, suffused with bright red, appearing before the leaves.

	Each	10
2 to 3 feet -----	\$1.00	\$8.00
3 to 4 feet -----	1.75	14.00
4 to 5 feet -----	2.25	20.00

**AMERICAN ELM** (*Ulmus Americana*)—The most beautiful of the Elms. It is lofty and spreading and very hardy.

	Each	10
5 to 6 feet -----	\$0.75	\$6.00
6 to 8 feet -----	1.25	10.00
8 to 10 feet -----	1.75	

**CHINESE ELM**—The new sensational tree; sturdy, quick growing and beautiful. Resists drought, heat and alkali, and will grow from 4 to 8 feet per season. Thrives in poor soil where other trees die out; in zero weather as well as in hot countries. Endorsed by Experiment Stations.

	Each	10
5 to 6 feet -----	\$0.50	\$4.50
6 to 8 feet -----	.75	6.00
8 to 9 feet -----	1.00	9.00
9 to 10 feet -----	1.25	11.00

**CORK BARK ELM** (*Ulmus Alata*)—A medium size tree with corky branches. Leaves dark green, fading to yellow in autumn. An extra fine shade tree.

	Each	10
4 to 5 feet -----	\$0.50	\$4.00
5 to 6 feet -----	.60	5.00

**HACKBERRY CELTIS OCCIDENTALIS** — A native, hardy tree whose worth and beauty are too often overlooked. Of strong growth with full, spreading top and abundant leaves. Has attractive and edible fruits or berries of small size. Excellent for street planting and ideal for lawns.

	Each	10
5 to 6 feet -----	\$0.75	\$6.00
6 to 8 feet -----	1.25	10.00



American Elm

**HALESIA** (Silver Bell)—Grows well in sheltered position. Pure white flowers are produced in abundance along the entire length of the branch; foliage attractive.

	Each	10
5 to 6 feet -----	\$0.75	\$6.00
6 to 8 feet -----	1.00	8.00

**HAMAMELIS VIRGINIANA** (Witch Hazel) — Good for natural plantings and shady places. Very unusual because of the season of bloom of its yellow flowers in November, when other shrubs are dormant.

	Each	10
18 to 24 inch -----	\$0.30	\$2.50
2 to 3 feet -----	.40	3.50
3 to 4 feet -----	.60	5.00

**HAWTHORN** (*Crus-Galli*)—Small tree, valuable for specimen planting. Leaves dark green, fading with tones of orange and scarlet. White flowers.

	Each	10
2 to 3 feet -----	\$0.40	\$3.50
3 to 4 feet -----	.50	4.50

**PAUL'S SCARLET THORN**—A well-known shrub or small tree, much prized for its double scarlet flowers in spring and red berries in late fall.

	Each	10
2 to 3 feet -----	\$0.65	\$6.00
3 to 4 feet -----	.85	7.50

**SWEET GUM** (*Liquidambar Styraciflua*)—A beautiful pyramidal tree, with maple-like leaves, assuming a gorgeous crimson color in winter.

	Each	10
4 to 5 feet -----	\$0.50	\$4.00
5 to 6 feet -----	.75	6.00
6 to 8 feet -----	1.25	10.00
8 to 10 feet -----	1.75	15.00



Chinese Elm

**TULIP TREE** (*Liriodendron Tulipifera*)—Often referred to as the Yellow Poplar. Large and stately tree with smooth bark, glossy light green leaves and spreading branches. The flowers are tulip shape, greenish yellow.

	Each	10
4 to 5 feet -----	\$0.30	\$2.50
5 to 6 feet -----	.45	4.00
6 to 8 feet -----	.75	6.00
8 to 10 feet -----	1.00	8.00
10 to 12 feet -----	1.50	12.50

**TEAS' WEEPING MULBERRY** (*Alba Pendula*)—A rather odd tree, with its long, sweeping branches, producing a fountain-like effect of large, glossy green leaves.

	Each	10
One year heads -----	\$1.00	
Two year heads -----	1.50	
Three year heads -----	2.50	

**RUSSIAN MULBERRY** (*Alba Tartarica*)—Hardy, low-growing tree, with shapely head; small, sweet berries in abundance.

	Each	10
2 to 3 feet -----	\$0.15	\$1.25
3 to 4 feet -----	.25	2.00
4 to 5 feet -----	.40	3.00

**NIGRA** (Black Mulberry)—A low-growing tree, bearing large, black fruits that ripen in July. A favorite tree of the birds and valuable for planting in poultry yards as the fowls are fond of the berries.

	Each	10
2 to 3 feet -----	\$0.15	\$1.25
3 to 4 feet -----	.25	2.00

**HICKS EVERBEARING MULBERRY**—Taller than the Russian, but not compact, and with larger leaves. The berries ripen over a period of about four months, and are abundant, large, black and sweet.

	Each	10
4 to 5 feet -----	\$0.40	\$3.50
5 to 6 feet -----	.50	4.50

**MAGNOLIA ACUMINATA** (Cucumber Tree) — Tall-growing pyramidal tree. Large creamy white blossoms appear in mid-summer, followed by cucumber-shaped fruits that turn bright crimson.



Weeping Mulberry

	Each	10
3 to 4 feet -----	\$0.50	\$4.00
4 to 5 feet -----	.65	6.00
5 to 6 feet -----	1.00	9.00

**MAGNOLIA MACROPHYLLA** (Great Leaved Magnolia)—A symmetrical tree with wide spreading branches. Leaves very large, bright green above, silvery gray beneath. Flowers creamy white, fragrant.

	Each	10
3 to 4 feet -----	\$0.50	\$4.00
4 to 5 feet -----	.65	6.00
5 to 6 feet -----	1.00	9.00

**MAGNOLIA SOULANGEANA** — Cup-shaped rosy-violet blossoms open before leaves appear. Will grow 30 feet or more or can be trimmed to desired height. Rare and beautiful.

	Each	10
2 to 3 feet, B&B --	\$2.00	\$17.00
3 to 4 feet, B&B --	3.50	30.00
4 to 5 feet, B&B --	5.00	45.00

**MAGNOLIA TRIPETALA** — Low-growing. Immense leaves in clusters around the large white flowers; rose-colored fruit cones.

	Each	10
3 to 4 feet -----	\$0.50	\$4.00
4 to 5 feet -----	.65	6.00
5 to 6 feet -----	1.00	9.00

**NYSSA MULTIFLORA** (Sour Gum) —An attractive and popular native tree of easy growth, admired for the gorgeous coloring of the leaves and its dark blue berries in the fall.

	Each	10
4 to 5 feet -----	\$0.40	\$3.00
5 to 6 feet -----	.50	4.00
6 to 7 feet -----	.75	6.50



Magnolia Soulangeana

**PAW PAW (Asimina) (Triloba)**—A low tree with spreading branches. Leaves ovate, light green on the upper surface, pale beneath. Flowers brown, or reddish brown, appearing when the leaves are unfolding. Fruit oblong, yellow when fully grown, at maturity a dark brown, very sweet and luscious.

	Each	10
3 to 4 feet -----	\$0.40	\$3.50
4 to 5 feet -----	.65	5.00

**AMERICAN PERSIMMON (Diospyros)**—An ornamental tree, native of Southern states, but fruit will ripen in the North.

	Each	10
2 to 3 feet -----	\$0.25	\$2.00
3 to 4 feet -----	.35	3.00
4 to 6 feet -----	.50	4.50

**JAPANESE PERSIMMON (Kaki)**—A vigorous grower and an early and most prolific bearer; fruit larger than the American Persimmon.

	Each	10
2 to 3 feet -----	\$0.50	\$4.50
3 to 4 feet -----	.75	7.00

### POPULUS-POPLAR

Inexpensive, hardy, rapid grower, very much in use for quick or temporary effects. Easy to transplant, thriving under almost every condition. We offer several mighty good varieties.

**SILVER POPLAR (Alba)**—This tree will thrive where most others fail. Quick growing with silvery leaves.

	Each	10
3 to 4 feet -----	\$0.40	\$3.50
4 to 5 feet -----	.65	5.00

**BOLLEANA POPLAR (Silver Leaf)**—Will grow quickly to a tall spire. Its leaves are glossy green, silvery beneath, creating an attractive flashing effect when stirred by the winds. We have some extra fine trees we offer at the following prices.

	Each	10
8 to 10 feet -----	\$1.50	\$12.50
10 to 12 feet -----	2.00	15.00



Lombardy Poplar



Carolina Poplar

**BALM OF GILEAD (Populus Candicans)**—A big spreading, fast growing tree. The buds have a pleasant fragrance in early spring.

	Each	10
2 to 3 feet -----	\$0.25	\$2.00
3 to 4 feet -----	.40	3.50
4 to 6 feet -----	.50	4.00

**GOLDEN LEAF POPLAR**—One of the best of the yellow-leaved trees. Generally holds its color throughout the growing season. Resembles the Carolina Poplar, except in color of foliage.

	Each	10
4 to 6 feet -----	\$0.50	\$4.00
6 to 8 feet -----	.75	6.50

**CAROLINA POPLAR (Monilifera)**—Very beautiful tree. Foliage is glossy and showy, borne on thin stems, causing the leaves to flutter and turn with the wind. Erect in form.

	Each	10
2 to 3 feet -----	\$0.25	\$2.00
3 to 4 feet -----	.40	3.50
4 to 6 feet -----	.75	6.50
6 to 8 feet -----	1.00	9.00

Boyd Nursery Company, May 1st, 1934  
McMinnville, Tenn.

Gentlemen—

Last fall I ordered from you 7,000 black walnut seedlings to be shipped to my farm at Midland City, Alabama. This stock was duly received and transplanted.

I have just returned from an inspection of the farm including the acreage transplanted with walnuts, and it is a pleasure to state to you that the acreage transplanted with your stock measure up to the highest expectations of the most optimistic forester, as this stock speaks for itself, and its foliage is particularly outstanding and noticeable when compared with two similar shipments received from other nurseries.

I am merely writing this letter thinking it might be interesting for you to know the general favorable comments throughout the community in which your stock was transplanted.

Very truly yours,  
Albert B. Hawkins

**LOMBARDY POPLAR** (*Nigra*)—Grows tall and symmetrical. Branches close to the ground and is fine for screen purposes or landscape work. A picturesque tree.

	Each	10
3 to 4 feet, branched -----	\$0.25	\$2.00
4 to 6 feet, branched -----	.40	3.50
6 to 8 feet, branched -----	.60	5.00
8 to 10 feet, branched -----	.85	7.50
10 to 12 feet branched -----	1.00	9.00

**NEW CHINESE LOMBARDY POPLAR** (*Simon*)  
—This tree has recently become very popular. Large dark green foliage and pyramidal shape. Fast growing.

	Each	10
3 to 4 feet -----	\$0.25	\$2.00
4 to 6 feet -----	.40	3.50
6 to 8 feet -----	.60	5.00
8 to 10 feet -----	.85	7.50

**CAROLINA BUCKTHORN** (*Rhamnus Caroliniana*)—Hardy, small tree. Black berries in profusion and dark green, lustrous leaves. Used largely for hedge plants.

	Each	10
3 to 4 feet, transplanted -----	\$0.35	\$3.00
4 to 6 feet, transplanted -----	.60	5.00
6 to 8 feet, transplanted -----	1.00	8.00

**WEeping WILLOW** (*Salix Babylonica*)—Best known of all Willows. Will grow in any good soil. The long, drooping, slender branches of olive-green make it splendid for formal effects.

	Each	10
3 to 4 feet -----	\$0.45	\$4.00
4 to 6 feet -----	.60	5.00
6 to 8 feet -----	1.00	8.00
8 to 10 feet -----	1.50	12.50

**PUSSY WILLOW** (*Salix Caprea*)—Upright growing Willow. The fur-like catkins along the branches in early spring make it very attractive and are fine for making delightful "springy" bouquets.

	Each	10
2 to 3 feet -----	\$0.25	\$2.00
3 to 4 feet -----	.35	3.00



Weeping Willow

**AMERICAN SYCAMORE** (*Platanus Occidentalis*)  
—For quick shade the Sycamore is highly recommended. The bark peels annually and the new bark is silvery white. A very hardy, dependable tree.

	Each	10
4 to 5 feet -----	\$0.35	\$3.00
5 to 6 feet -----	.45	4.00
6 to 8 feet -----	.85	7.50
8 to 10 feet -----	1.25	10.00

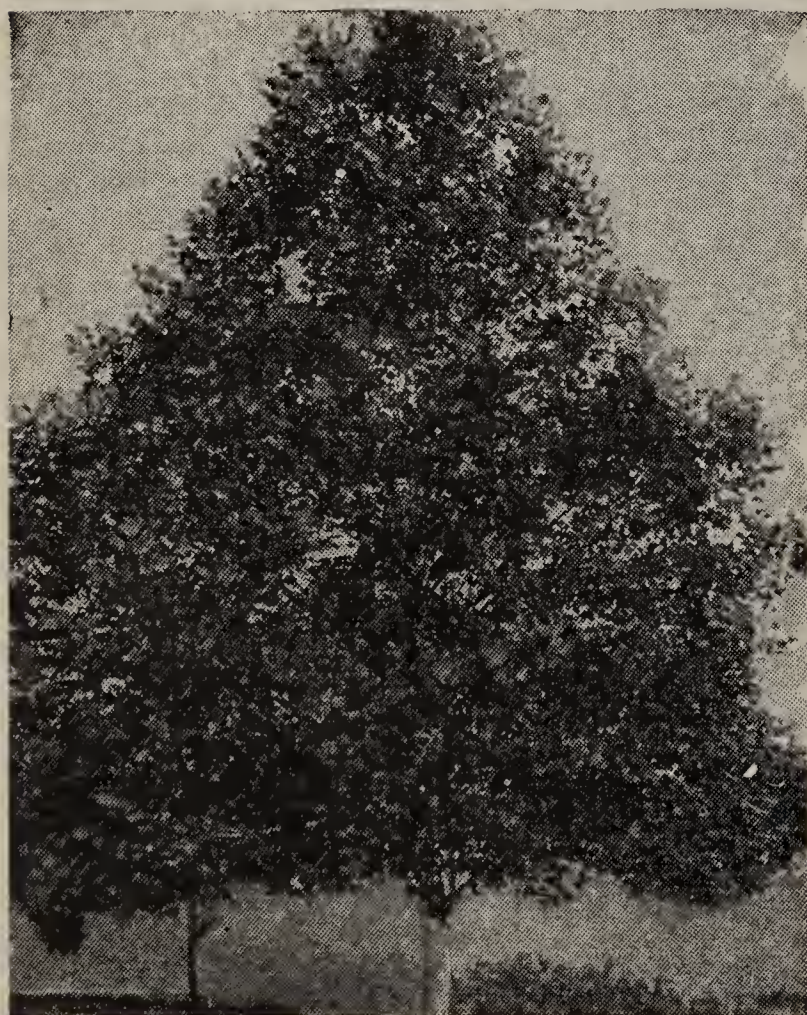
**BLACK LOCUST** (*Robinia Pseudoacacia*) — The Black Locust is very valuable for timber. A quick growing tree and will attain great height. Flowers in long, white racemes, very fragrant.

	Each	10
18 to 24 inch -----	\$0.05	\$0.40
2 to 3 feet -----	.10	.75
3 to 4 feet -----	.20	1.75
4 to 6 feet -----	.40	
6 to 8 feet -----	.75	

Small sizes can be furnished in quantity for reforestation, at special prices, listed on page 44.

**BLACK HAW** (*Viburnum Prunifolium*)—Small tree, growing to about 15 feet, with spreading stout branches. Flowers snowy-white, followed by bluish black fruit.

	Each	10
2 to 3 feet -----	\$0.40	\$3.50
3 to 4 feet -----	.75	6.50



American Sycamore

Boyd Nursery Co., November 12, 1934  
McMinnville, Tenn.

Gentlemen:

Herewith my check for \$100.00, the same to apply on account, and I will send you the balance just as soon as I can check up on the nursery stock which I received Saturday, and which was sent out to the farm, but which I have not yet had a chance to check up.

I saw the stock in bulk and it certainly did look nice.

By the way, the trucking company had the stock billed as weighing about 5,000 pounds. Please tell me whether or not you think the stock could have possibly weighed that much.

Kindly acknowledge receipt and let me hear from you promptly, and in the meantime I want to thank you for the pains with my order.

Very truly yours,

J. E. Holmes





## Coniferous Evergreens

Evergreens are always in favor for landscape work, their deep green foliage making a strong background for the brilliant colors of summer; but it is in winter that they are most appreciated, the absence of other colors tending to bring out their beauty of form in a most striking manner. They can be used in foundation or corner plantings, as single specimens on the lawn or along the driveway, as hedges, windbreaks, and in many delightful ways.

**BALSAM FIR** (*Abies Balsamea*)—A widely known tree of great hardiness, much the same shape as the Norway Spruce. Compact, intense dark green foliage, with purplish-violet cones.

	Each	10
12 to 18 inch -----	\$0.75	\$6.50
18 to 24 inch -----	1.25	10.00

**DOUGLAS FIR** (*Pseudotsuga Douglasi*)—A strong growing tree, with beautiful, soft, dark green foliage. Thrives well in almost any situation.

	Each	10
18 to 24 inch -----	\$1.00	\$9.00
2 to 3 feet -----	2.00	18.00
3 to 4 feet -----	3.00	25.00

**CEDRUS DEODARA** (Indian Cedar)—Of pyramidal form, reaching large size. Branches feathery and spreading. Foliage a beautiful shade of bluish green, similar to Colorado Blue Spruce. Should be planted on well drained soil.

	Each	10
18 to 24 inch -----	\$1.00	\$9.00
2 to 3 feet -----	1.50	12.50
3 to 4 feet -----	2.50	20.00
4 to 5 feet -----	3.50	30.00

**LAWSON CYPRESS** (*Cupressus Lawsoniana*)—Grows pyramidal shape, and very compact. Foliage bright, grayish green, disposed in fern-like expansions.

	Each	10
2 to 3 feet -----	\$1.50	\$15.00
3 to 4 feet -----	2.50	20.00
4 to 5 feet -----	3.50	30.00

## JUNIPER (*Juniperus*)

A group of evergreen trees and shrubs of great beauty and adaptability. The upgrowing forms make beautiful specimens, while the prostrate varieties are widely used as a ground cover.

**CANADENSIS** (Spreading Juniper)—A fine creeping Juniper, seldom more than one foot high, and attaining a spread of 8 to 10 feet. A dense compact mat of beautiful green foliage.

	Each	10
12 to 15 inch spread -----	\$0.75	\$6.00
15 to 18 inch spread -----	1.00	8.00
18 to 24 inch spread -----	1.50	12.50
24 to 30 inch spread -----	2.00	18.00
30 to 36 inch spread -----	2.50	22.50

**PROSTRATE JUNIPER** (*Communis Depressa*)—Can be kept to any size desired, stands trimming well. Leaves sharp pointed, gray green and light silvery beneath. Excellent for ground cover.

	Each	10
12 to 18 inch spread -----	\$0.85	\$7.50
18 to 24 inch spread -----	1.25	10.00
24 to 30 inch spread -----	1.50	12.50
30 to 36 inch spread -----	2.00	18.00



Juniper Canadensis

**PFITZER'S JUNIPER** (*Pfitzeriana*)—One of the most popular Junipers, used in foundation plantings. Branches grow at angle of about forty-five degrees from the stem. It is a grayish green, summer and winter.

	Each	10
12 to 18 inch spread -----	\$1.00	\$9.00
18 to 24 inch spread -----	1.50	12.50
24 to 30 inch spread -----	2.00	18.00

**SAVIN JUNIPER** (*Sabina*)—A low growing Juniper, foliage needle-shaped, dark green; gives a general effect of very graceful plumes. Good for rock work.

	Each	10
15 to 18 inch -----	\$1.00	\$9.00
18 to 24 inch -----	1.50	12.50
24 to 30 inch -----	2.00	18.00

**IRISH JUNIPER** (*Communis Hibernica*)—Grows columnar, very erect. Foliage sage green and very compact. Much used in cemeteries.

	Each	10
12 to 18 inch -----	\$0.50	\$4.50
18 to 24 inch -----	.75	6.50
24 to 30 inch -----	1.00	9.00
30 to 36 inch -----	1.50	12.50
36 to 42 inch -----	2.00	18.00



Pfitzer's Juniper

**BLUE CEDAR** (*Virginiana Glauca*)—Foliage silvery blue, very compact. One of the best types of blue evergreens. Very desirable for specimen planting.

	Each	10
18 to 24 inch -----	\$1.75	\$15.00
2 to 3 feet -----	2.25	20.00
3 to 4 feet -----	3.00	25.00
4 to 5 feet -----	5.00	40.00

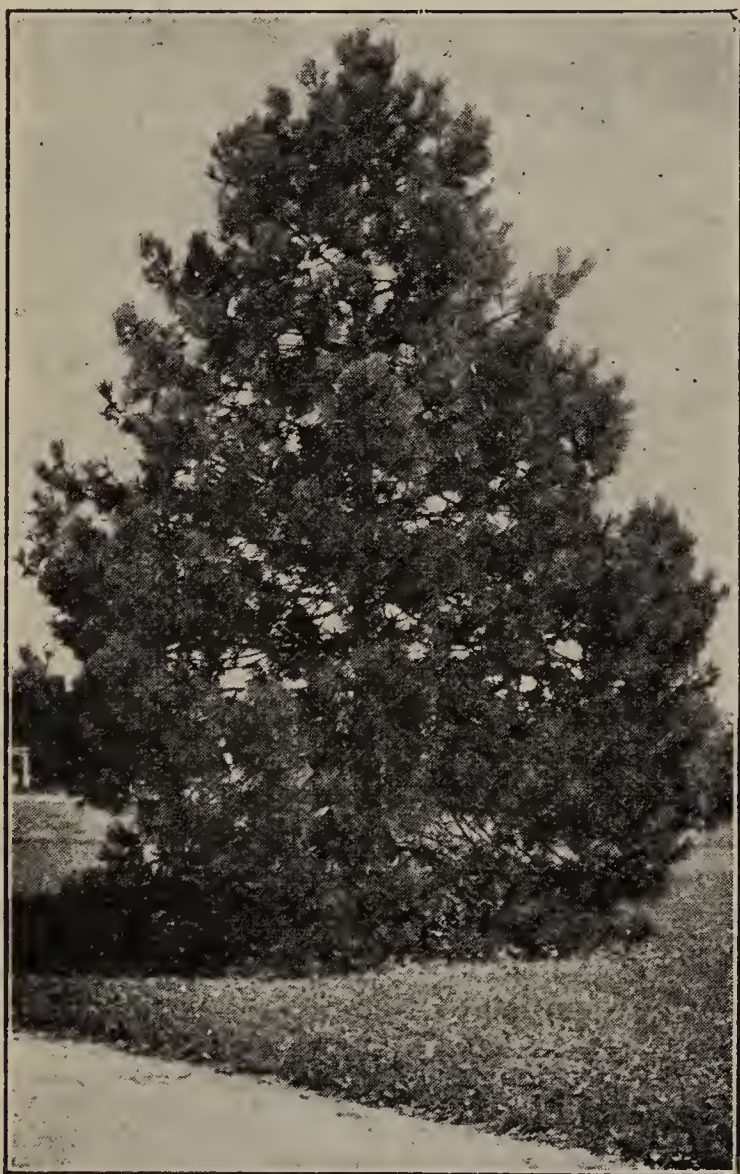
**PINUS—PINE**

**JACK PINE** (*Banksiana*)—A low-growing tree of bushy habit. Very hardy. Foliage bright green.

	Each	10
5 to 6 feet -----	\$3.00	\$25.00
6 to 8 feet -----	5.00	45.00

**AUSTRIAN PINE** (*Austriaca*)—A tall, massive tree, with spreading branches and gray bark. Long, stiff very dark green needles.

	Each	10
18 to 24 inch -----	\$1.00	\$9.00
2 to 3 feet -----	2.00	17.50
3 to 4 feet -----	3.50	30.00



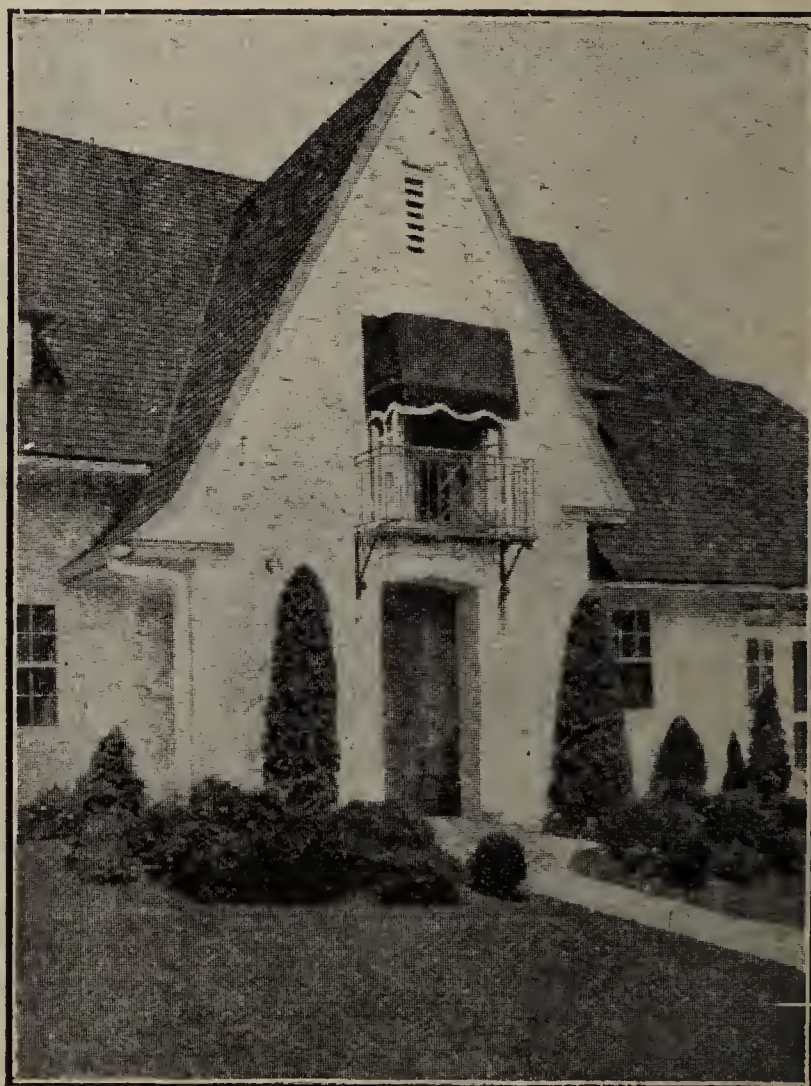
Austrian Pine

**STRICTA JUNIPER** (*Excelsa Stricta*)—An upright growing variety, very desirable for foundation plantings or as a specimen where a low-growing tree is desired. Grayish green foliage.

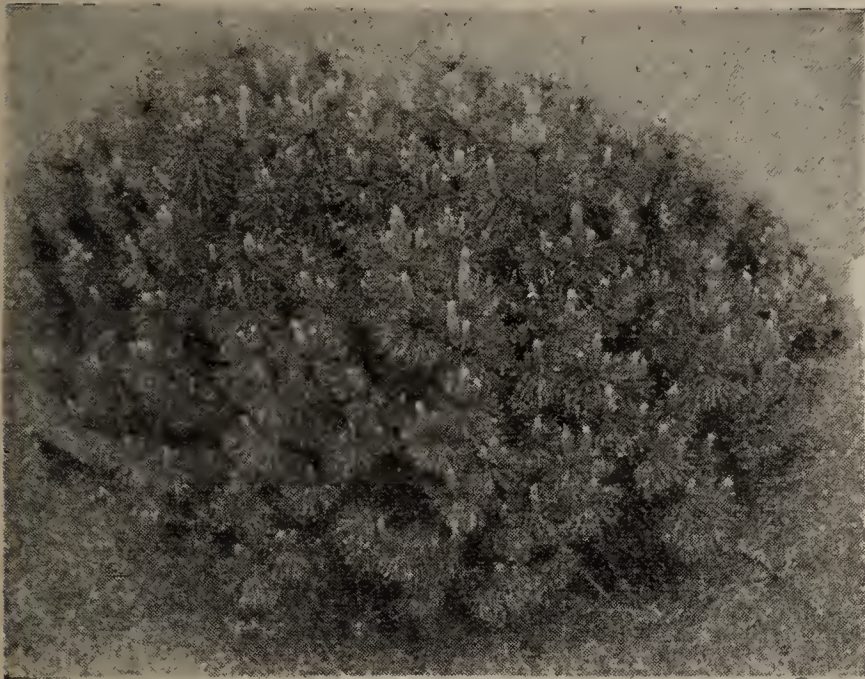
	Each	10
12 to 18 inch -----	\$0.85	\$6.00
18 to 24 inch -----	1.10	9.00
24 to 30 inch -----	1.60	15.00
30 to 36 inch -----	2.10	20.00

**RED CEDAR** (*Juniper Virginiana*)—Our native evergreen tree, a strong and sturdy grower. Useful for shade or ornamental purposes, can be trimmed to any desired shape. Light green foliage.

	Each	10
18 to 24 inch -----	\$0.50	\$4.00
2 to 3 feet -----	.75	6.00
3 to 4 feet -----	1.25	10.00
4 to 5 feet -----	1.75	
5 to 6 feet -----	2.50	



Foundation Planting of Evergreens



Mugho Pine

**TAEDA (Loblolly Pine)**—Spreading branches, leaves 6 to 9 inches long, three in a bundle, cones 3 to 5 inches.

	Each	10
2 to 3 feet -----	\$1.50	\$12.50
3 to 4 feet -----	2.50	20.00
4 to 5 feet -----	3.00	25.00

**MUGHO PINE (Pinus Mughus)**—A low spreading Pine, very useful in lawn planting. Stout, bright green needles of medium length.

	Each	10
12 to 15 inch -----	\$1.50	\$12.50
15 to 18 inch -----	2.00	17.50
18 to 24 inch -----	3.00	25.00

**OLD FIELD PINE (Native Yellow Pine)**—A tall, handsome tree with slender, pendulous branches forming an oval crown. Needles long and stiff, dark green. Dull brown cones.

	Each	10
3 to 4 feet -----	\$1.50	\$12.50
4 to 5 feet -----	2.00	17.50
5 to 6 feet -----	3.00	25.00

**RED PINE (Resinosa)**—Also known as Norway Pine. A very ornamental tree. Needles are long and soft; a good green color.

	Each	10
12 to 18 inch -----	\$0.40	\$3.00
18 to 24 inch -----	.50	4.00
2 to 3 feet -----	.75	6.00
3 to 4 feet -----	1.00	8.00

**SCOTCH PINE (Sylvestris)**—One of the hardiest of the Pines. Dense growth with bluish green foliage.

	Each	10
18 to 24 inch -----	\$1.00	\$9.00
2 to 3 feet -----	1.50	12.50
3 to 4 feet -----	2.50	20.00



Evergreen Planting

## PICEA-SPRUCE

**WHITE SPRUCE (Alba Picea)**—A handsome tree of pyramidal, compact form. Very good for mass planting.

	Each	10
12 to 18 inch -----	\$0.75	\$6.00
18 to 24 inch -----	1.25	10.00
2 to 3 feet -----	2.00	15.00

**NORWAY SPRUCE (Excelsa)**—The most popular Spruce, due to its hardiness. Makes rapid growth and is easily transplanted. Dark green foliage. Used extensively for Christmas trees.

	Each	10
12 to 18 inch -----	\$0.75	\$6.00
18 to 24 inch -----	1.25	10.00
2 to 3 feet -----	2.00	15.00

**COLORADO BLUE SPRUCE (Pungens Glauca)**—A symmetrical tree of broad based pyramidal form. Foliage intense steel-blue needles. One of the showiest and most impressive evergreens.

	Each	
18 to 24 inch -----	\$6.50	
2 to 3 feet -----	8.00	
3 to 4 feet -----	12.50	



Colorado Blue Spruce

**RED SPRUCE (Rubra)**—This variety is similar to the Norway Spruce, but hardly so large. Light green foliage.

	Each	10
12 to 18 inch -----	\$0.75	\$6.00
18 to 24 inch -----	1.25	10.00

## RETINOSPORA-CYPRESS

**GOLDEN PLUMED CYPRESS (Retinospora Plumosa Aurea)**—Golden green, feathery foliage. Should be kept sheared for best results. Pyramidal in habit of growth.

**PLUMOSA GREEN**—Very much the same as the Golden Plumosa, only that the foliage is a bright green.

**PISIFERA AUREA (Golden Sawara Cypress)**—Pyramid shape; foliage bluish green, with gold-tipped branches. Very hardy.

Prices above varieties:		Each	10
12 to 15 inch -----	\$0.40	\$3.50	
15 to 18 inch -----	.60	5.00	
18 to 24 inch -----	.85	7.50	
2 to 3 feet -----	1.25	10.00	
3 to 4 feet -----	2.00	15.00	
4 to 5 feet -----	2.50	20.00	
5 to 6 feet -----	3.00	25.00	

**VEITCH'S SILVER CYPRESS** (*Squarrosa Veitchi*)—Very showy type, silvery blue-green foliage. Valuable for its beautiful coloring.

	Each	10
18 to 24 inch -----	\$1.00	\$9.00
2 to 3 feet -----	1.50	12.50
3 to 4 feet -----	2.00	15.00

**THUYA-ARBOR VITAE**

A group of most useful hardy evergreens, thriving in a wide variety of soils and exposures. In general, a moist soil with a porous substratum is to be preferred. Many of the formal varieties are used in producing architectural effects. In the extreme North, the American varieties are to be preferred on account of greater hardiness, while in the South the Oriental varieties are adapted to the conditions of climate and environment.

**AMERICAN ARBOR VITAE** (*Thuya Occidentalis*)

—Very popular for its easiness to transplant. Conical in shape, fairly compact and light green color.

	Each	10
12 to 18 inch -----	\$0.50	\$4.00
18 to 24 inch -----	.75	6.00
24 to 30 inch -----	1.00	9.00
30 to 36 inch -----	1.50	12.00
36 to 42 inch -----	2.00	18.00

**GLOBE ARBOR VITAE** (*Globosa*)—A perfect globe when well grown, the spread usually equalling the height. Foliage of light green.

	Each	10
12 to 15 inch -----	\$0.75	\$6.50
15 to 18 inch -----	1.25	10.00
18 to 24 inch -----	1.50	12.50
24 to 30 inch -----	2.50	20.00

**HOVEY'S ARBOR VITAE** (*Hoveyi*)—Very useful and popular for porch boxes, or foundation planting. Yellow-green foliage, dense.

	Each	10
18 to 24 inch -----	\$1.00	\$9.00
24 to 30 inch -----	2.00	17.50
30 to 36 inch -----	3.00	25.00

**CHINESE ARBOR VITAE** (*Orientalis*)—Very much like the American Arbor Vitae, but more open in growth, a very rank grower. Dark green foliage. Can be used in mass planting, or used for specimens.

	Each	10
12 to 18 inch -----	\$0.35	\$2.50
18 to 24 inch -----	.50	4.00
24 to 30 inch -----	.75	6.50
30 to 36 inch -----	1.00	9.00
36 to 42 inch -----	1.75	15.00
42 to 50 inch -----	2.50	20.00



Globe Arbor Vitae

**WAREANA ARBOR VITAE**—Of low-growing pyramidal shape, rather broad, with heavy bluish green foliage. Harly and very desirable.

	Each	10
18 to 24 inch -----	1.50	\$12.50
24 to 30 inch -----	2.00	17.50

**BERKMAN'S GOLDEN ARBOR VITAE** (*Aurea Nana*)—Of dense, compact form; beautiful golden color. Dwarf type, valuable for foregrounds and edging.

	Each	10
12 to 18 inch -----	\$0.75	\$6.50
18 to 24 inch -----	1.25	10.00
24 to 30 inch -----	2.00	17.50
30 to 36 inch -----	3.00	25.00

**BIOTA BONITA**—Similar to the dwarf Golden in habit of growth, but a good solid green in color.

	Each	10
12 to 18 inch -----	\$1.00	\$9.00
18 to 24 inch -----	1.50	12.50
24 to 30 inch -----	2.00	17.50



American Arbor Vitae



Colorado Blue Spruce and Junipers

**COMPACT ARBOR VITAE (Compacta)**—Broad and conical shape in growth. Dense, compact, light green foliage.

	Each	10
12 to 18 inch -----	\$0.65	\$5.00
18 to 24 inch -----	.85	7.50
24 to 30 inch -----	1.25	10.00
30 to 36 inch -----	2.00	17.50

**ELEGANTISSIMA**—Beautiful golden-tipped pyramid. Very attractive. Foliage colored bright yellow in the Spring and yellowish green afterwards. One of the best.

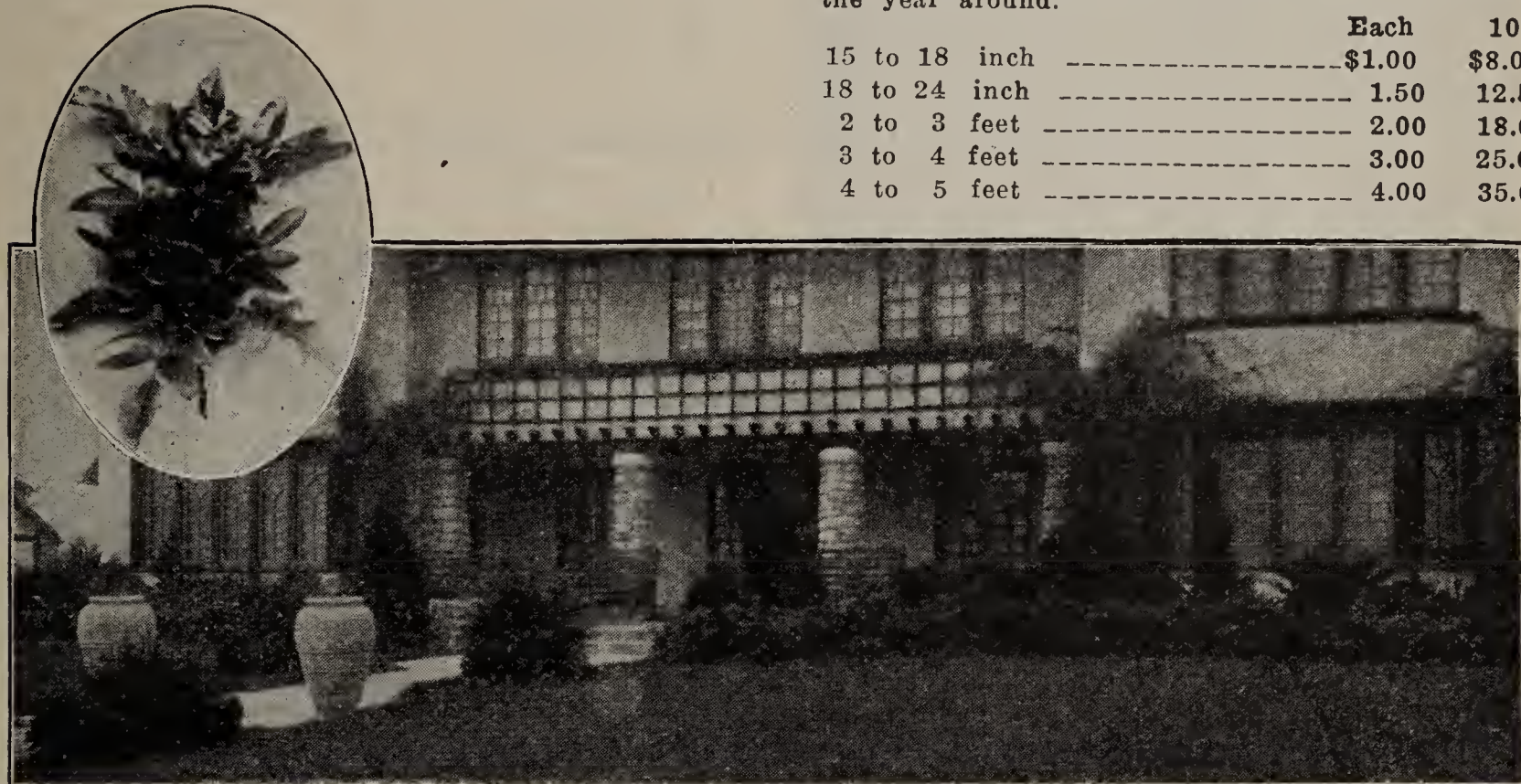
	Each	10
18 to 24 inch -----	\$1.50	\$12.50
24 to 30 inch -----	2.00	17.50
30 to 36 inch -----	3.00	25.00

**PYRAMIDAL ARBOR VITAE (Pyramidalis)**—A densely columnar type, compact and erect. Foliage a deep green. Invaluable for the striking effect when planted to center groups or in pairs at entrances.

	Each	10
18 to 24 inch -----	\$1.00	\$9.00
24 to 30 inch -----	1.50	12.50
30 to 36 inch -----	2.25	20.00
36 to 42 inch -----	3.50	30.00

**HEMLOCK SPRUCE (Tsuga Canadensis)** — A broadly pyramidal, medium-sized tree of dense growth, with rich green foliage and drooping branches. It is excellent as a single lawn tree, or for hedge purposes. It is a beautiful soft green the year around.

	Each	10
15 to 18 inch -----	\$1.00	\$8.00
18 to 24 inch -----	1.50	12.50
2 to 3 feet -----	2.00	18.00
3 to 4 feet -----	3.00	25.00
4 to 5 feet -----	4.00	35.00



## Broad-Leaved Evergreens

**ABELIA GRANDIFLORA**—One of the most attractive and most popular of the Broad-leaved Evergreens. We cannot recommend it too highly. Foliage small, dark green and glossy, borne on graceful, arching branches, which show a distinct red color. Small, bell-shaped white flowers, tinged with pink. Well adapted for hedging.

If wanted balled and burlapped, please send 15c extra per plant.

	Each	10
12 to 18 inch -----	\$0.20	\$1.50
18 to 24 inch -----	.30	2.50
2 to 3 feet -----	.40	3.50
3 to 4 feet -----	.50	4.50

**AMOENA AZALEA**—One of the dwarf-growing varieties. Beautiful pink blooms borne in great profusion in May. Foliage rich bronze in winter.

	Each	10
12 to 15 inch B&B -----	\$2.00	\$17.50
15 to 18 inch B&B -----	2.50	22.50

**HINODEGIRI AZALEA**—A hardy, early-blooming Japanese Azalea of dwarf, compact habit of growth. Bright carmine flowers in profusion in early spring that almost hide the foliage, which assumes a reddish appearance in the fall.

	Each	10
12 to 15 inch B&B -----	\$2.50	\$22.50
15 to 18 inch B&B -----	3.00	25.00

**BOXWOOD (Buxus Sempervirens)**—Tall growing, the type most commonly seen in old-fashioned hedges, or can be used as individual, specimen plantings. The leaves are small, round, glossy green. Can be trimmed to any shape.

	Each	10
12 to 15 inch -----	\$1.00	\$9.00
15 to 18 inch -----	1.50	12.50
18 to 24 inch -----	2.00	17.50
24 to 30 inch -----	2.50	22.50
30 to 36 inch -----	3.50	30.00



Azalea



Cotoneaster Horizontalis

**BOXWOOD (Buxus Suffruticosa)**—This is the very dwarf evergreen plant so highly esteemed for small hedges; for edging the borders of flower beds or for planting along walks. Retains its dwarf size, never growing tall.

	Each	10
8 to 12 inch -----	\$0.75	\$6.00
12 to 15 inch -----	1.00	9.00
15 to 18 inch -----	1.50	12.50

**CAPE JASMINE (Gardenia Florida)**—This beautiful flowering shrub has always been very popular. The double, waxlike flowers, which are exquisitely fragrant, are greatly in demand as button-hole bouquets.

	Each	10
12 to 18 inch, transplanted -----	\$0.75	\$6.00
18 to 24 inch, transplanted -----	1.00	8.00
24 to 30 inch, transplanted -----	1.25	10.00

**COTONEASTER HORIZONTALIS (Rock Cotoneaster)**—A low-growing shrub with almost horizontal branches. Leaves dark green, flowers pinkish white, fruit red.

	Each	10
12 to 18 inch -----	\$0.75	\$6.50
18 to 24 inch -----	1.00	9.00
24 to 30 inch -----	1.25	10.00



Boxwood Sempervirens

**EUONYMUS JAPONICUS (Evergreen Euonymus)**

—An upright tall-growing shrub, with smooth, slightly quadrangular or striped branches; leaves dark, shiny green. Fine plant for the lawn and succeeds in almost any situation.

	Each	10
12 to 18 inch -----	\$0.50	\$4.00
18 to 24 inch -----	.75	6.00
2 to 3 feet -----	1.25	10.00

**AMERICAN HOLLY (Ilex Opaca)**—A beautiful evergreen tree, with glossy, irregular-shaped leaves and bright red berries, familiarly known as Christmas Holly. It is quite hardy and adapts itself to varied soil conditions.

	Each	10
12 to 18 inch -----	\$1.00	\$8.00
2 to 3 feet -----	2.00	17.50
3 to 4 feet -----	3.00	25.00
4 to 5 feet -----	4.00	35.00

**MOUNTAIN LAUREL (Kalmia Latifolia)**—A native evergreen shrub with rich green foliage and bearing in early summer large clusters of wonderfully beautiful pink and white flowers, in the greatest profusion. It is perfectly hardy and succeeds in many different climates.

	Each	10
12 to 18 inch -----	\$1.00	\$8.00
18 to 24 inch -----	1.50	12.50
2 to 3 feet -----	2.00	17.50



Kalmia, Mountain Laurel

**JAPANESE PRIVET**—A very rapid-growing upright shrub with thick, dark green foliage. The showy, fragrant white flowers borne in plumes, are followed by clusters of blue-black berries.

	Each	10
3 to 4 feet -----	\$0.75	\$6.00
4 to 5 feet -----	1.00	8.00

**LUCIDUM PRIVET**—A broad-leaved evergreen shrub of compact growth. Highly recommended, grows in almost any kind of soil. Desirable for foundation and border planting.

	Each	10
18 to 24 inch -----	\$0.50	\$4.00
2 to 3 feet -----	.75	6.00
3 to 4 feet -----	1.00	8.00

**NEPAUL'S PRIVET**—A medium size shrub, very essential when planted in masses or groups. Resembles the Japanese Privet, but more compact.

	Each	10
18 to 24 inch -----	\$0.75	\$6.00
2 to 3 feet -----	1.00	8.00
3 to 4 feet -----	1.25	10.00
4 to 5 feet -----	1.50	12.50

**NANDINA DOMESTICA**—A beautiful, upright-growing shrub, with numerous reed-like stems springing from the same root. Leaves deep, glossy green, when young tinged with red; in winter coppery tones are assumed. White flowers are followed by masses of bright red berries which are retained all winter. Extensively used in landscaping.

	Each	10
15 to 18 inch -----	\$0.75	\$6.00
18 to 24 inch -----	1.00	8.00
2 to 3 feet -----	1.50	12.50
3 to 4 feet -----	2.00	17.50

**MAHONIA AQUIFOLIA** (Oregon Holly)—Dense, low, spreading shrub, beautiful holly-like foliage, glossy green, bluish purple and bronze. Yellow blossoms followed by blue, grape-like berries.

	Each	10
12 to 15 inch -----	\$1.00	\$8.50
15 to 18 inch -----	1.50	12.50
18 to 24 inch -----	1.75	15.00

**RHODODENDRON CAROLINIUM** — The most beautiful of the native Rhododendrons. Produce in early May a wealth of unusually large, rose-pink flowers in good sized clusters.

**RHODODENDRON CATAWBA**—Valuable for its handsome foliage and gorgeous blooms of lilac-purple.



Nandina Domestica

**MAGNOLIA GRANDIFLORA** (Southern Magnolia)—The grandest of all our native evergreen trees. Nothing more conspicuous can be seen among evergreens when its enormous, fragrant white flowers are fully expanded.

	Each	10
18 to 24 inch -----	\$0.75	\$6.00
2 to 3 feet -----	1.00	8.00
3 to 4 feet -----	1.50	12.50
4 to 6 feet -----	2.50	20.00
6 to 8 feet -----	3.50	30.00

**JAPANESE HOLLY** (Ilex Crenata)—Of dense, compact growth, with small leaves similar to Boxwood, but with rough, serrated edges; small, inconspicuous greenish white blooms in spring, followed by purplish black berries in fall.

	Each	10
15 to 18 inch, B&B -----	\$1.35	\$12.50
18 to 24 inch, B&B -----	1.75	15.00
24 to 36 inch, B&B -----	2.25	20.00



Rhododendron

**RHODODENDRON MAXIMUM**—Strongly recommended for mass planting. Bears large clusters of pinkish-white flowers in June.

Prices on above varieties:	Each	10
12 to 18 inch, transplanted -----	\$1.00	\$8.00
18 to 24 inch, transplanted -----	1.50	12.50

**CHERRY LAUREL** (Laurocerasus Caroliniana)—One of the most beautiful broad-leaved evergreens. Glistening green foliage of medium shade. Very desirable as a single specimen or for grouping. Upright growth; can be trimmed to any desired form and kept at any height.

	Each	10
2 to 3 feet -----	\$1.00	\$8.00
3 to 4 feet -----	1.50	12.50
4 to 5 feet -----	2.00	17.50

**ENGLISH LAUREL**—A small tree or bush, with handsome shining foliage. Flowers white, in numerous racemes, expanding in April and May.

	Each	10
18 to 24 inch -----	\$1.00	\$8.00
2 to 3 feet -----	1.25	10.00



Euonymus Japonica

# Hardy Ornamental Vines

Beautiful covering for walls, verandas, or for screen harsh outlines, lending great charm to barren surfaces and furnishing shade.



Boston Ivy

## AMPELOPSIS ENGELMANNI (Engelmann Ivy)

A new variety of Ampelopsis which has some advantage over the older varieties. It has short joints and small, very thick foliage, and in fall turns to a pretty red color. Will grow in any soil and withstands drought and heat.

	Each	10
One year transplanted	-----	\$0.25 \$2.00
Two year transplanted	-----	.35 3.00

## VIRGINIA CREEPER (Ampelopsis Quinquefolia)

—Has large, deeply cut leaves that turn crimson in autumn. Very rapid grower.

	Each	10
Two year, transplanted	-----	\$0.25 \$2.00
Three year, transplanted	-----	.35 3.00

**BOSTON IVY (Ampelopsis Veitchi)**—Used for covering walls, as it will cling to the smoothest surface. Foliage turns to brilliant orange and crimson in the fall.

	Each	10
Medium	-----	\$0.25 \$2.00
Two year, transplanted	-----	.35 3.00

## ARISTOLOCHIA SIPHO (Dutchman's Pipe Vine)

—A very vigorous growing vine, with large, deep green leaves and green twigs, producing in abundance a purplish blossom, much resembling a pipe. Grows very dense.

	Each	10
Two year	-----	\$0.60 \$5.00

**ARISTOLOCHIA TOMENTOSA (Dutchman's Pipe Vine)**—Yellowish, pipe-shaped flowers. Makes a perfect screen for porches.

	Each	10
One year seedlings	-----	\$0.25 \$2.00
Two year transplanted	-----	.35 3.00

**BIGNONIA RADICANS (Trumpet Vine)**—A native, strong climbing vine, with good leaves and scarlet, trumpet-shaped flowers.

	Each	10
One year	-----	\$0.25 \$2.00
Two year	-----	.35 3.00

## CELASTRUS SCANDENS (American Bittersweet)

—Handsome, glossy foliage and large clusters of beautiful orange-crimson fruits, which hang on all winter.

	Each	10
One year	-----	\$0.25 \$2.00
Two year transplanted	-----	.35 3.00

## CLEMATIS PANICULATA (Japanese Clematis)

—Small creamy white, star-shaped flowers in wild profusion, which are very fragrant,

	Each	10
Two year plants	-----	\$0.35 \$3.00

## CLEMATIS VIRGINIANA (Wild Clematis)

—Very hardy. Flowers are white, borne in leafy panicles.

	Each	10
Two year plants	-----	\$0.25 \$2.00

**CLEMATIS JACKMANNI**—Beautiful velvety-purple blossoms. Extremely free flowering.

**HENRYI CLEMATIS**—Immense, pure white single flowers. The finest of the large flowering Clematis.

## MADAME EDOUARD ANDRE CLEMATIS

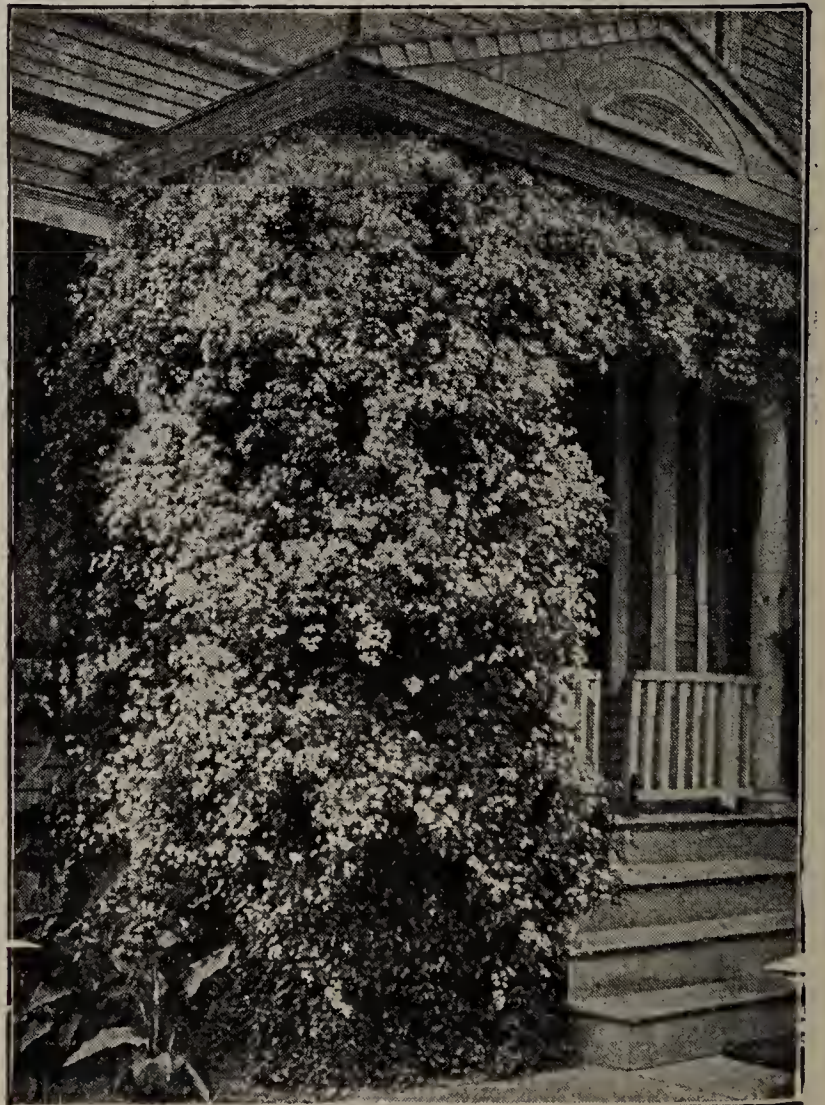
—This is often times called the crimson Jackmanni. Strong, vigorous grower.

**CLEMATIS ROMANA**—Flowers of gigantic size, six inches in diameter, and of a fine light blue color.

Prices on above varieties:	Each	10
Strong two-year vines	-----	\$0.65 \$5.00

**EUONYMUS RADICANS**—A very dependable species of Euonymus. Slow growing, but useful as a ground cover. The thick, bright green leaves persist all winter.

	Each	10
Two year	-----	\$0.35 \$3.00



Clematis Paniculata





Hall's Japan Honeysuckle

**EUONYMUS RADICANS VEGETUS** (Evergreen Bittersweet or Evergreen Ivy)—A very useful vine. It is an evergreen, with large, rounded, glossy leaves, which are attractive the year round, and with its orange-red fruit, the plant makes a pleasant variety in the Winter gardens. Sometimes called evergreen Bittersweet.

	Each	10
Two year -----	\$0.50	\$4.00

**ENGLISH IVY** (*Hedera Helix*)—This variety favors shady locations. Fine for the South, but hardy only as a ground cover where the winter is too severe.

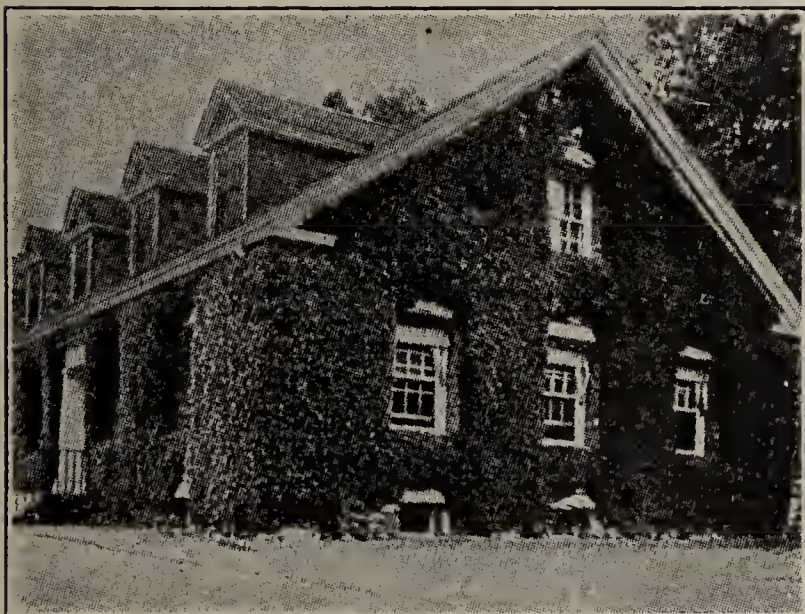
	Each	10
Small plants -----	\$0.25	\$2.00
Transplanted -----	.35	3.00

**HALL'S JAPAN HONEYSUCKLE** (*Lonicera Halliana*)—This vine will grow under any condition. Dark green foliage, almost evergreen, with an abundance of white flowers, changing to yellow, which are very fragrant.

	Each	10	100
Medium -----	\$0.10	\$0.50	\$3.00
One year No. 1 -----	.15	.75	5.00
Two year No. 1 -----	.25	1.00	7.00

**SCARLET TRUMPET HONEYSUCKLE** (*Lonicera Sempervirens*)—An exceptionally hardy vine and fine bloomer. Blossoms bright scarlet, trumpet-shaped, with rich, dark green leaves.

	Each	10
Two year transplanted -----	\$0.20	\$1.50
Three year transplanted -----	.30	2.50



Ivy Covered Walls

**LYCIUM BARBARUM** (Matrimony Vine) — Throws out very long branches with a decided tendency to droop, therefore especially valuable for covering slopes or embankments; suitable for porches, the foliage being rich and handsome. Will grow in any soil. Has bright red berries.

	Each	10
Two year strong plants -----	\$0.35	\$3.00

**PACHYSANDRA** (Japanese Spurge)—A very useful ground cover for shady locations. Bright green leaves, greenish white flowers.

	Each	10
One year -----	\$0.25	\$2.00
Two year -----	.35	3.00

**PASSIFLORA** (Passion Flower)—A fast-growing vine with deeply cut, sea-green leaves and fragrant blue flowers.

	Each	10
One year plants -----	\$0.15	\$1.00
Two year transplanted -----	.25	2.00

**KUDZU VINE** (*Pueraria Thunbergiana*)—Makes the most marvelous growth of any vine, its large leaves making dense shade. The flowers are rosy purple.

	Each	10
One year seedlings -----	\$0.10	\$0.85
Two year strong plants -----	.15	1.00
Three year strong plants -----	.25	2.00



**TECOMA RADICANS** (American Trumpet Vine) —Very high climbing vine, with spreading branches. Leaves dark green; flowers orange red within, scarlet without.

	Each	10
One year -----	\$0.25	\$2.00
Two year -----	.35	3.00

**VINCA MINOR** (Common Periwinkle)—Hardy, trailing plant valuable for covering ground in deep shade; shining evergreen foliage and lilac-blue flowers.

	Each	10
Small clumps -----	\$0.25	\$2.00
Large clumps -----	.35	3.00

If wanted in quantity lots, write for special prices.

**VITIS AESTIVALIS** (Summer Grape)—Not planted for fruit, but for the ornamental value of its handsome foliage, distinguished by the reddish fuzz on the under side.

	Each	10
Two year -----	\$0.25	\$2.00

**OUR FAMOUS COLLECTION OF CLIMBING VINES**

These vines are strong, robust growers, taken direct from our nurseries, and are first quality stock.

1 Ampelopsis Quinquefolia	-----	\$0.35
1 Clematis Paniculata	-----	.35
1 Clematis Jackmani	-----	.50
1 Lonicera Sempervirens	-----	.30
1 Wisteria Purple	-----	.40

Value, \$1.90

Unusual Value, \$1.25 for One Each of Above Named Vines

**VITIS CORDIFOLIA** (Frost Grape)—Vigorous growing vine with bright green foliage and purplish black berries that ripen and hang on until frost.

	Each	10
Two year	-----	\$0.25 \$2.00

**VITIS LABRUSCA** (Fox Grape)—Strong, rapid growing, with large, thick leaves and purplish black berries that change to a reddish brown.

	Each	10
Two year	-----	\$0.25 \$2.00

**VITIS ROTUNDIFOLIA** (Muscadine Grape)—Vigorous growing vine with heavy, showy foliage. Fruit very large berries and bronze color when fully ripe. Flesh pulpy, sweet with musky flavor; quality unexcelled.

	Each	10
Two year	-----	\$0.25 \$2.00

**WISTERIA**—Especially ornamental in early summer with their large, drooping clusters of fragrant blooms. We have the CHINESE WHITE and CHINESE PURPLE in extra strong plants.

**WISTERIA MAGNIFICA** (Common Purple Wisteria)—Blooms in May. An unusual variety with immense clusters of large flowers, lavender colored.

Prices of above varieties:	Each	10
Medium	-----	\$0.30 \$2.50
Two year transplanted	-----	.40 3.50

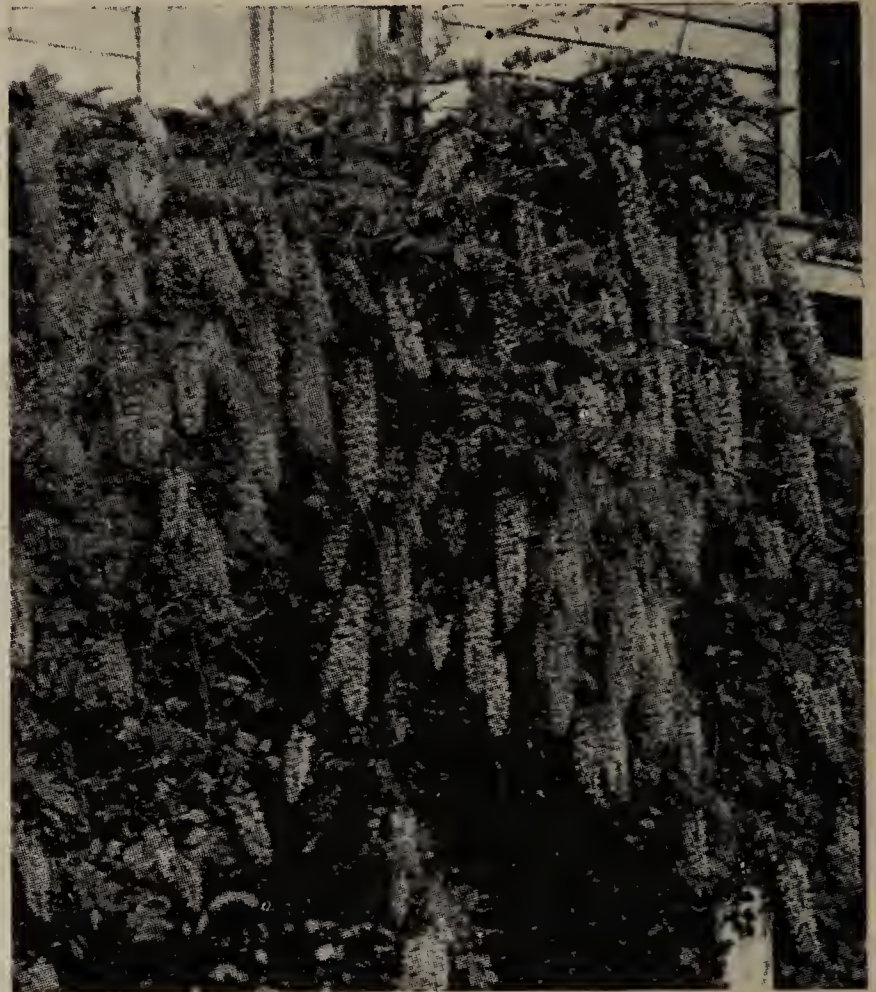
**NUT TREES**

For Ornament, for Shade, and Profitable Crops

Almost every farm contains land that should be planted to nut trees. Nuts in many cases pay better than farm crops or fruits, while most kinds are making a growth of valuable timber that will of itself pay a large per cent on the investment. The highly ornamental feature of nut trees should not be overlooked.



Pecan



Wisteria

**HAZELNUTS** (Corylus Americana)—Nuts borne in large fringed fruit husks. Kernels sweet and edible. A very hardy tree with handsome foliage.

	Each	10
2 to 3 feet	-----	\$0.25 \$2.00
3 to 4 feet	-----	.35 3.00

**BLACK WALNUT** (Juglans Nigra)—Native tree of large size, produces large crops of delicious meaty nuts. The wood of the Black Walnut tree commands the highest price on the market because of its beauty and value in furniture making.

	Each	10
18 to 24 inch	-----	\$0.10 \$0.85
2 to 3 feet	-----	.15 1.00
3 to 4 feet	-----	.25 2.00
4 to 6 feet	-----	.35 3.00
6 to 8 feet	-----	.50 4.00

**WHITE WALNUTS** (Juglans Cinera)—Also called Butternuts. Valuable for shade. Highly prized producing a sweet, nutritious kernel.

	Each	10
2 to 3 feet	-----	\$0.20 \$1.50
3 to 4 feet	-----	.30 2.50
4 to 6 feet	-----	.40 3.00
6 to 8 feet	-----	.50 4.00
8 to 10 feet	-----	.75 6.00

**PECANS** (Carya Pecan)—Pecan growing is becoming a favorite industry in the Southern and Western states and is quite profitable. The trees are long lived, quite hardy and productive.

- Moneymaker**—Extra good; heavy producer.
- Schley**—Nuts of highest quality and very thin shell.
- Stuart**—Extremely hardy. Nuts good size, plump and well filled.
- Success**—Resembles the Stuart, only larger. Nuts excellent flavor.

Prices on above varieties:	Each	10
2 to 3 feet	-----	\$0.45 \$4.00
3 to 4 feet	-----	.65 5.00
4 to 5 feet	-----	.75 6.00

**AMERICAN SWEET CHESTNUT** (Castanea Dentata)—A large, ornamental tree, planted largely for shade; also valuable commercially. The nuts are the sweetest of any variety.

	Each	10
18 to 24 inch	-----	\$0.40 \$3.50
2 to 3 feet	-----	.65 5.50
3 to 4 feet	-----	.85 7.50

# ROSES, The Glory of the Garden

The American home is hardly complete without its rose garden; the rose is truly the Queen of Flowers. No other flowering plant or shrub can compare with the rose in its delicate shades of color. Start a rose garden of your own; the pleasant recreation of caring for your plants and watching them grow and develop into wonderfully beautiful flowers will many times repay you for the cost. Select half a dozen—a dozen, or as many as will be needed to plant a garden.

## WHITE

**MRS. DUDLEY CROSS**—Beautiful creamy white with petals delicately edged with pink, rosy yellow at the center; full and double flowers. Strong, vigorous grower.

**BESSIE BROWN**—Very large blooms, creamy white tinged with pink and very fragrant. An old favorite.

**FRAU KARL DRUSCHKI**—White American Beauty. This is deservedly one of the most popular roses grown; flowers pure white, perfect in form, very free bloomer. Strong grower, perfectly hardy everywhere. A truly magnificent rose.

**KAISERIN AUGUSTA VICTORIA**—Pure white, does not pink when planted out; splendid, large buds and superb, full double blooms, making the choicest cut flowers. A most sturdy grower, blooming steadily until late frost.

**KILLARNEY WHITE**—Very long pointed buds of the original Killarney form, but snowy white. This rose is among the best pure white garden roses.

**WILLIAM R. SMITH**—Flowers are freely produced, creamy white with strong tints of pink. A vigorous, dependable rose. Free blooming all season.

## PINK

**COLUMBIA**—Popular greenhouse variety which does well outdoors, producing long-stemmed pointed flowers of vivid pink throughout the entire season; very fragrant.

**JONKHEER J. L. MOCK**—Clear imperial pink, reverse of petals rosy, silvery white; blooms of magnificent size and form produced freely on stiff, erect canes.

**KILLARNEY, or The Irish Beauty**—Brilliant sparkling pink with large, pointed buds, broad, wax-like petals with silvery edges and enormous semi-full flowers of exceeding beauty.

**DAME EDITH HELEN**—The supreme pink everblooming rose of the age. Large, full double blooms of glowing pink, delightfully fragrant, that are superb in the garden or in bouquets.

**MRS. CHAS. BELL**—The shell-pink Radiance, with an exquisite salmon background. Hardy, steady bloomer, and should be in every garden.

**PAUL NEYRON**—The largest rose in cultivation, sometimes called the Peony Rose. Color light, smoky rose; flowers are very double and full, delightfully fragrant. The plant makes a healthy growth and has clean, glossy foliage. Blooms two or three times a year.

**PINK RADIANCE**—Charming in every particular; healthy growing, fine color and freedom of bloom. In color of flower it is both unique and beautiful—a bright rose with opal and coppery reflections. Hardy everywhere with protection. As its name suggests, it is radiantly beautiful.

**PRESIDENT HERBERT HOOVER**—The outstanding novelty rose recently introduced. Large flowers of very charming combination of cerise-pink, flame and yellow, with broad, thick petals; very fragrant. Remarkably vigorous grower with clean handsome foliage. Very profuse bloomer. 60c each; 3 for \$1.50.

## RED

**FRANCIS SCOTT KEY**—An outstanding American variety; extremely large bloom of a rich, crimson-red; full, very double. Fine foliage and decidedly hardy. Named for writer of "Star Spangled Banner."

**HADLEY**—Deep rich, velvety crimson. Well formed buds on long stiff stems. Very fragrant; free producer of flowers.

**GENERAL JACQUEMINOT**—One of the most popular of the red roses; brilliant crimson, large and very effective. Very fragrant and one of the hardiest.

**SENSATION**—Handsome buds, large blooms of very deep blackish maroon; very fragrant. Almost thornless. Healthy foliage. The finest of the dark roses.

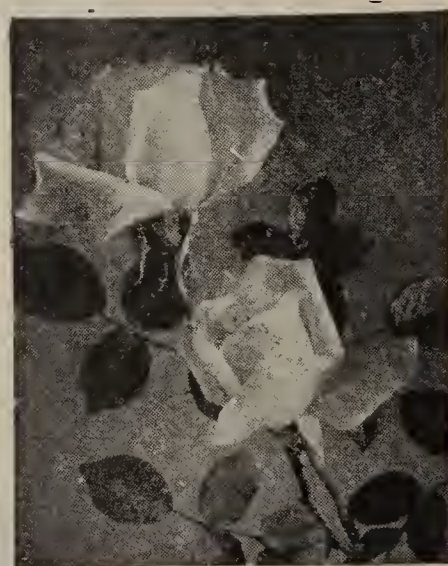
Any of the above mentioned hardy bush roses, 45c each, \$1.25 per three; \$4.00 per ten, unless otherwise specified.



Dame Edith Helen



Pink Radiance



Mrs. Chas. Bell



Dorothy Perkins



White Killarney



Columbia



Sunburst



Mrs. Aaron Ward



Los Angeles



Joanna Hill

**GRUSS AN TEPLITZ**—Brightest red of all roses, a rich scarlet with crimson shading; deliciously fragrant. Hardy, vigorous grower. Blooms from early June until frost.

**RED RADIANCE**—The color is a splendid even shade of clear red, without a trace of any other color, retaining its vividness for an unusually long time after being cut. It is a remarkable bloomer, being constantly in flower from early spring until freezing weather.

### YELLOW

**TALISMAN**—A novel production and perhaps the highest colored of all roses. Rich shadings and blending of orange, scarlet and gold. Beautiful cup-shaped buds, and full flowers with appealing fragrance. Very free bloomer. 60c each; 3 for \$1.50.

**ALEXANDER HILL GRAY**—Pale lemon yellow deepening in the center of its perfectly formed fragrant flowers. Three for \$1.50.

**LADY HILLINGDON**—Deep apricot yellow to orange; long pointed buds; a free-flowering forcer and striking decorative. Awarded Gold Medal of National Rose Society.

**LOS ANGELES**—A rose of unusual beauty of coloring, being a luminous flame-pink toned with coral and shaded with translucent gold at the base of the petals. The flowers are perfect in form and borne erect on strong branching stems. Very vigorous, pointed buds are exquisite for cutting.

**LOUXEMBOURG**—Long, pointed buds of beautiful bronze-yellow, and very fragrant. One of the best yellows for your rose garden.

**MRS. AARON WARD**—Low, bushy plants with pointed, holly-like foliage and fine fawn-colored buds and open blooms.

**JOANNA HILL**—A gorgeous new yellow rose—long, pointed buds of perfect form, opening into large, exquisite flowers of clear yellow with orange-yellow heart. Ideal blooms for cutting, as they last an unusually long time. 60c each; three for \$1.50.

**SUNBURST**—Orange-copper or golden orange; all intense shades, giving an extremely brilliant effect. A giant rose, long stems, long pointed buds; vigorous and healthy.

Any of the above mentioned hardy rose bushes 45c each; \$1.25 per three; \$4.00 per 10, unless otherwise specified.

### ROSE GARDEN COLLECTION

One dozen Monthly Roses. Two each of the following varieties:

Bessie Brown .....	\$0.90
Frau Karl Druschki .....	.90
Radiance, Pink .....	.90
Radiance, Red .....	.90
Paul Neyron .....	.90
Lady Hillingdon .....	.90

Catalog Price, \$5.40

The Above Dozen Field Grown Roses for ----- \$3.95

### CLIMBING ROSES

**MARY WALLACE**—The outstanding large-flowered pink climber. Very brilliant and invariably satisfactory. Growth is enormous and rapid, make good cut flowers.

**BABY RAMBLER**—The best known rambler rose. Immense clusters of small double, crimson blooms. Very pretty and showy.

**DOROTHY PERKINS**—Pink Rambler. Graceful, twining growth of great vigor. Flowers soft, shell-pink, small crinkly, in great clusters.

**DR. W. VAN FLEET**—Large clusters of exquisite pale pink on fine, long stems. Extremely vigorous, and has marvelously fine foliage. One of the most popular of all climbers.

**GARDENIA**—One of the strongest growers, with beautiful glossy foliage. Buds rich creamy yellow and open flowers yellow fading to cream.

**MADAME PLANTIER**—Flowers are pure white, very large and double. Continuous bloomer. One of the best hardy climbing roses.

**MARECHAL NIEL (Climbing)**—Long known as the finest yellow rose in the world, a model of beauty and fragrance. Lovely buds and flowers of deep, golden yellow. Strong growth and abundant bloom. Succeeds in the South with ordinary care, but needs winter protection. 50c each; \$4.50 per 10.

**PAUL'S SCARLET CLIMBER**—The most popular red-flowered climber of the day. Flowers large, well-shaped, vivid scarlet-red.

**WICHURAIANA**—The memorial rose. Pure shining white, with bright golden center. Single large blossoms, glossy dark green leaves.

Any of above varieties of Climbing Roses, 35c each; \$1.00 per three; \$3.00 per ten, unless otherwise specified.



Mary Wallace

# Summer Flowering Bulbs

## LILIES

None of the fall-planting bulbs afford quite so much pleasure as the Lilies. Rich and varied in color, stately and handsome in habit, they stand out prominently from all other hardy plants. They require but little attention and really should not be disturbed for several years.

**DAY LILY**—Flowers large, rich golden yellow, marked with Indian yellow. 40 cents per dozen; \$3.00 per hundred.

**LEMON LILY**—Fragrant, clear yellow. Very freely produced in early summer. 10 cents each; \$1.00 per dozen; \$8.00 per 100.

**TAWNY DAY LILY**—Flowers tawny orange with wavy margined petals. 40 cents per dozen; \$3.00 per 100.



Lily of the Valley

**REGAL LILY**—One of the most beautiful Lilies. Flowers are white, slightly suffused with pink, with a beautiful glow of canary-yellow at center. Its perfume is exquisite. 2-year bulbs, 20c each; 6 for \$1.00.



Regal Lily

**TIGER LILY**—Deep orange-red flowers, spotted with black, purplish spots; borne in many clusters. 10c each; 3 for 25c.

**SPIDER LILY**—An entirely distinct species of mid-summer flowering Lily. They should be in every garden. The large snow-white flowers are very suggestive of the name. 75c per dozen; \$5.00 per 100.

**LILY OF THE VALLEY**—This variety loves the shade and thrives best in rich soil. Flowers pure white, bell-shaped and very fragrant. Glossy green leaves that partially enfold the blossoms. \$1.00 per dozen; \$7.00 per 100.

## CANNAS

**CALIFORNIA**—A beautiful yellow Canna; dark green foliage. Very much admired. Will grow from 3 to 5 feet.

**CITY OF PORTLAND**—A new variety of a good deep clear pink; the full-petaled trusses are borne freely on heavy stalks, continuing throughout the summer. 3½ feet.



Cannas are effective when planted in masses

**INDIANA**—Glistening, golden orange flowers, with silky texture, very attractive. 4 feet.

**KING HUMBERT (Red)**—Bronze leaf; flowers 6 inches in diameter; brilliant orange-scarlet with bright red markings. 5 feet.

**KING HUMBERT (Yellow)**—Same habit as King Humbert Red, but with dark green foliage and deep rich yellow flowers. Grows 4 to 5 feet.

**MARVEL CANNA**—A strikingly beautiful, tall growing Canna, with exceptionally handsome dark green foliage and large, intensely vivid, light copper colored flowers. A magnificent and distinct variety.

**RICHARD WALLACE**—A splendid and very effective canary-yellow, large flowers and trusses. 4 feet.

**SHENANDOAH**—One of the prettiest pink blooming Cannas. Flowers salmon-pink; foliage bronze. 4 feet.

**VENUS**—Rosy pink, bordered yellow; foliage green. 4 feet.

Price all varieties: 10c each; 65c per dozen; \$4.00 per 100.



King Humbert Cannas

#### WHITE

**ALBANIA**—A large self color white. A fine cut flower.

**CARMEN SYLVA**—One of the best whites. Pure white, with slight lilac penciled markings in throat. Many open at once.

**HELEN FRANKLIN**—Pure white with purple featherings on lower petals. Ruffled flowers.

**LILY WHITE**—Creamy White. Creamy white shading to cream throat with very slight magenta markings in deep throat.

#### PINK SHADES

**MARSHALL FOCH**—A giant salmon-pink, lightly ruffled.

**MRS. DR. NORTON**—A tall-growing cream-pink. A very popular flower of superior merits.

**ROSE GLORY**—One of the largest and beautiful ruffled varieties. Purest rose-pink color.

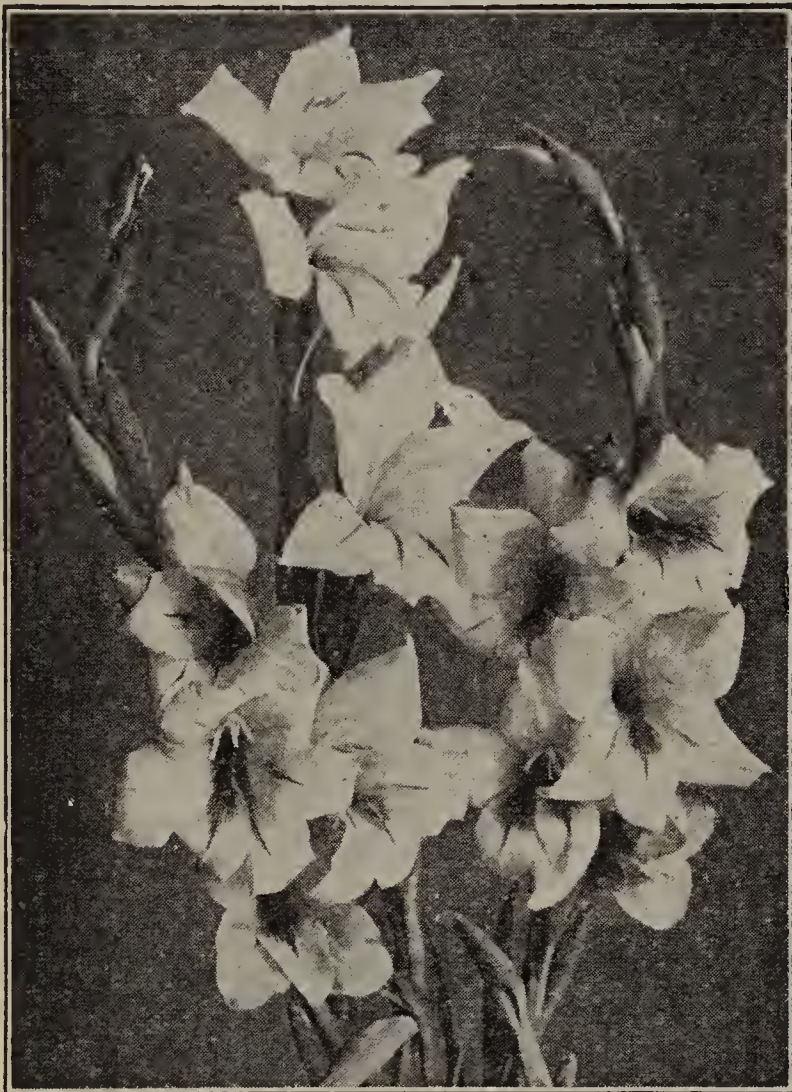
**E. J. SHAYLOR**—A tall, majestic spike, with beautiful ruffled blooms, of a deep rose-pink color. An outstanding and showy variety.

Price all varieties: 5c each; 50c per dozen; \$4.00 per 100.

#### RED SHADES

**CRIMSON GLOW**—Well named, the color being a glowing crimson-scarlet massive spikes and flowers of large size.

**DIANA**—A very large, dark brilliant red.



Lily White Gladiolus

## GLADIOLUS

Purple and Blue Shades

**ANNA EBERIUS**—A dark velvety purple. Throat a deeper shade. A very striking color and well liked by all who have seen it. A strong grower.

**BYRON L. SMITH**—One of the best varieties, most refined lavender-pink on white ground. Many blossoms open at one time; effective and fine as a cut flower.

**LILAC GLORY**—Large flowers, many open. Soft lilac-rose pink. Beautiful deeper lilac-rose and pink throat.

**PURPLE GLORY**—Beautiful ruffled, dark velvet purple, with almost black blotches.



Field of Glads



Pride of Lancaster

**SCARLET PRINCEPS**—Intense scarlet, slightly deeper in throat. The massive arrangement of flowers on stem is extraordinarily distinct.

**UHLAN CHIEF**—Tall, graceful, slender spike. Flower of the most intense vermilion-scarlet. Lower petals deeper colored and beautifully dark feathered.

**ORANGE SHADES**

**ALICE TIPLADY**—A grand, large primulinus of most beautiful orange-saffron color.

**ORANGE GLORY**—Strong orange color, slightly weakening in the throat.

**PRIDE OF LANCASTER**—A brilliant orange-salmon, with throat blotched scarlet-red. Tall plant, good size blooms and beautifully ruffled.

**YELLOW SHADES**

**FLORA**—A golden yellow variety of great excellence, being a free, strong grower with splendid spikes and flowers of large size.

**GOLDEN MEASURE**—The incomparable true golden yellow. Gigantic spikes, carrying wide open flowers of fine form. Excellent in every way.

**SCHWABEN**—Pure canary-yellow, shaded sulphur. The golden yellow throat slightly blotched dull carmine. Tall, strong spikes.

Price all varieties: 5c each; 50c per dozen; \$4.00 per 100.



Peonies

**SPECIAL COLOR COLLECTION**

- 6 Alice Tiplady, Orange -----
- 6 Crimson Glow, Crimson -----
- 6 Schwaben, Yellow -----
- 6 Rose Glory, Rose-pink -----
- 6 Purple Glory, Purple -----

Our Special Price for Above Collection ---\$1.00

**PEONIES**

There is no flower more beautiful than the Peony, and as it comes back stronger and blooms more profusely each year, every flower lover should have a few Peony plants. Although very hardy and easily grown, the Peony prefers a good, deep soil, in a rather moist, yet sunny location. Plant the roots so that the eyes are about 2 to 3 inches under the surface. Plant in the fall.

**ALFRED DE MUSSET**—A fine white. Each 30c; 10, \$2.50.

**CANDIDISSIMA**—White guard petals, pale yellow center. Each 25c; 10, \$2.00.

**DUCHESS DE NEMOURS**—Pure white, extra large and fine. Each 35c; 10, \$3.00.

**DUCHESS OF WELLINGTON**—Yellowish white; very soft. Each 20c; 10, \$1.50.

**FESTIVA MAXIMA**—White, with central petals flaked with red. Each 30c; 10, \$2.50.

**MADONNA**—White. Each, 25c; 10, \$2.00.

**ANDRE LAURIES**—Rich, velvety red. Each 30c; 10, \$2.50.

**FORMOSA**—Light rose, paler in the center. Each, 35c; 10, \$3.00.

**FELIX CROUSSE**—Brilliant red; large, good fragrance. Each 45c; 10, \$4.00.



Gertrude

**IRIS**

The grand and royal colors of the flowers of these superb, hardy plants are not surpassed by those of any garden subject. They are invaluable, due to their hardiness and easy culture, and for the lavish wealth of blossoms that crown their numerous stems. A sunny location in moist, rich soil is best adapted to their requirements. They will greatly increase in size of clumps each season.

**RHEIN NIXE**—Purple falls, white standards.

**GERTRUDE**—Bright blue.



**ARCHEVEQUE**—Deep wine-purple.  
**PAXATAWNEY**—Lavender.  
**ATLAS**—Violet.  
**ATROVIOLACEA**—Deep purple.  
**MIRANDA**—Blue purple.  
**MUSTH**—Light lavender blue.  
**AUREA**—Yellow.  
**QUEEN OF MAY**—Lavender pink.  
**SANS SOUCI**—Lemon yellow.  
**NIBELUNGEN**—Purple falls, buff standards.

Price all varieties: 10c each; \$1.00 per dozen; \$4.00 per 100.

## ORNAMENTAL GRASSES

These beautiful grasses can be used with telling effect in borders, large beds or by the margins of ponds and lakes. They are easy of cultivation and perfectly hardy.

**EULALIA GRACILLIMA UNIVITTATA** (Japan Rush)—Very graceful habit with long, narrow bright green foliage, with silvery mid-rib.

**EULALIA DWARF VARIEGATA**—Very ornamental, long, narrow leaves striped green, white and often pink or yellow.

Prices on above varieties: 35c per dozen; \$2.50 per hundred.

## Hardy Perennial Flowers

No home is quite complete without a good collection of the hardy perennials. Here nature tries to outdo herself in arranging all the delicate tints of the rainbow, with their sweet scents rivaling even the perfumes from the orient. A home without the perennials misses the best of nature's planting. A little care to see that weeds and grass do not choke them will repay one a thousand fold. The advantage of the Perennials is that they do not have to be replaced every season and most of them improve with age.

### AQUILEGIA OR COLUMBINE

The Columbine is one of the most beautiful of all hardy plants. Their period of flowering covers the late spring and early summer months. They should be grown by every lover of old-fashioned flowers.

**MRS. SCOTT ELLIOTT**—Free-flowering, with long stems and extremely long, shiny spurs. Pastel shades of rose, blue and yellow in many delightful combinations. 15c each; \$1.50 per dozen.

### DIANTHUS-HARDY PINK

**BARBATUS** (Sweet William)—Old favorites, bearing their sweet, clove-scented flowers in the greatest profusion during May and June. They are indispensable for the edge of the hardy border and for cutting. Assorted colors. 15c each; \$1.50 per dozen.

### DIGITALIS-FOXGLOVE

Impressive, tall-spined, heavy foliage plants of value for background massing.

**GIANT SHIRLEY**—Flower heads are about 3 feet long, crowded with big, bell-shaped blossoms. Colors range from white and shell-pink to deepest rose, dotted with crimson and chocolate. 15c each; \$1.50 per dozen.



Mrs. Scott Elliott





Astilbe

**DICENTRA, BLEEDING HEART**

**SPECTABILIS**—An old fashioned favorite; its long racemes of graceful heart-shaped pink flowers are always attractive. 40c each; 3 for \$1.00

**GAILLARDIA, BLANKET FLOWER**

**GRANDIFLORA**—Makes an unfailing supply of bloom in those rich, tawny shades of orange, yellow and red, so highly prized. Thrives in hot weather, through droughts. Fine for cutting. 15c each; \$1.50 per dozen.



Double Pearl

**TUBEROSE**

**DOUBLE PEARL**—One of the most delightfully fragrant and beautiful of the Summer flowering bulbs. For flowering in the open, plant about the middle of May, or as soon as the ground becomes warm. 10c each; 75c per doz.; \$5.00 per 100.

**MEXICAN EVERBLOOMING**—This charming single pure white Tuberose begins to flower in July and continues throughout the season, each bulb throwing from 2 to 5 flower spikes in succession. Delightfully fragrant. 5c each; 50c per doz.; \$3.50 per 100.

**GYPSOPHILA, BABY'S BREATH**

Valuable for "mist effect" in bouquets and in the garden. During midsummer the surface is a fleecy mass of white in loose panicles of minute, but myriad flowers. Does well in rather dry places. 15c each; \$1.50 per dozen.

**ASCLEPIAS**

**TUBEROSA** (Butterfly Weed)—Very showy native plant, growing to a height of 2½ feet, and producing flowers of brilliant orange-scarlet during July and August.

	Each	10
Two year transplanted -----	\$0.20	\$1.50

**ASTILBE**

One of the hardy, herbaceous Spireas. These beautiful new plants will, we believe, become very popular. They are perfectly hardy, easily grown and produce their graceful, feathery spikes of flowers in June and July. They do best in rich, deep, moist soil, but will thrive in any good garden soil. They are being used extensively as a border plant, or planted as a low shrub. Look over the following and send us your order.

**AMERICA**—Very light, delicate lavender pink. Each 35c; 10, \$2.50.

**GLADSTONE**—Extra early, pure white. Each 35c; 10, \$2.50.

**PEACH BLOSSOM**—Soft peach blossom pink. Very desirable. Each 35c; 10, \$2.50.

**GLORIA**—One of the new varieties; dense, feathery, dark pink plumes. Each 40c; 10, \$3.50.

**YUCCA FILAMENTOSA**

Exceedingly good for the rockery. Long, narrow leaves that remain green the entire year. It throws up a long flower stem in the summer 3 or 4 feet high, bearing large spikes of creamy white bell-shaped flowers that retain their beauty for a long time.

	Each	10
One year plants -----	\$0.10	\$0.75
Two year plants, clumps -----	.20	1.50



Yucca Filamentosa

## HOLLYHOCKS

Hollyhocks inject color and picturesqueness into tall backgrounds. Hardy and bloom throughout the summer.

Double Pink, Red, White and Yellow—15c each; \$1.50 per dozen.

## PHLOX

For brilliant masses of color in the landscape or hardy border, the Phlox ranks supreme. They bloom from July on, at a time when other flowers in the border are comparatively scarce.

**ATHIS**—Tall, light salmon, dark eye.

**BRIDESMAID**—White with crimson eye.

**CHAMPS ELYSEE**—Fine, rich crimson.

**ECLAIREUR**—Rose carmine, with a tint of purple.

**FORDHAM**—Pure white, with small red eye.

**LA VAGUE**—Pure mauve, dark eye.

**MRS. JENKINS**—Pure white, early bloomer.

**PANTHEON**—Salmon rose; very large flower.

**PEARL**—Beautiful pure white flowers.

**RICHARD WALLACE**—Pure white, with dark eye.

**R. P. STRUTHERS**—Bright, rosy carmine with claret-red eye.

Prices all varieties: 15c each; \$1.50 per dozen.

## DAHLIAS

Dahlias produce a wealth of color and bloom during the fall, unequalled for garden effect or cut flowers. For those who want Dahlias in variety and care little for names, we offer them in mixed lots, at 10c each; 75c per dozen.

## SHASTA DAISIES

Mammoth white flowers, sometimes 3 inches across, with yellow center and borne in profusion in July. Their position in the garden is a shimmering drift of snowy white. 5c each, 45c per dozen, \$2.50 per 100.



Phlox



Hardy Ferns

## COREOPSIS

A profusion of golden yellow flowers on long, graceful stems from early June until frost. Excellent for cutting. Grows 2 feet high. 10c each; 75c per dozen.

## HARDY FERNS

These are very useful for growing close to houses and in corners which are too shady for other plants. Most ferns do well in a light soil containing much vegetable matter, and it is always best to work a considerable amount of leaf mould into the soil of a fern bed.

**MAIDEN HAIR FERN**—A graceful species, with large deciduous leaves, very dark chestnut-brown stipes radically forked at the summit. Grows 10 to 15 inches high. Small roots 40 cents per dozen; \$3.00 per hundred.

**HAY-SCENTED FERN**—Has thin and delicate leaves, from one to three feet long. Stipes clustered; pale green and sweet scented. 50c per dozen, \$3.50 per hundred.

**CINNAMON FERN**—Stately fern with very large, creeping root stocks. Bright green with pinnatifid divisions, growing 3 to 5 feet tall. 50c per dozen; \$3.50 per hundred.

**ROYAL FERN**—Vigorous fern with good stout root stocks. Fronds will measure a foot or more wide, growing 2 to 5 feet tall. 60c per dozen; \$4.00 per hundred.

**CHRISTMAS FERN**—Beautiful evergreen fern with densely chaffy stipes. Leaves deep green with numerous pinnae, 1 to 2 feet long. 50c per dozen; \$3.50 per hundred.

## DELPHINIUM-HARDY LARKSPUR

Delphiniums are without question the most beautiful hardy plants in cultivation. Their long, showy spikes of various colored flowers are in bloom from June until frost, and furnish an unlimited supply of cut flowers. We offer the following varieties:

**BELLADONNA**—Clear blue flowers.

**BELLAMOSUM**—Dark blue flowers.

2 year size, 20c each; 3 for 50c; 6 for 90c; 12 for \$1.60.

When you are through with this catalogue, please hand it to one of your friends.

# FRUIT DEPARTMENT

On the following pages, we are listing a few fruit trees, grape vines and strawberry plants. We are not growers of fruit trees in our nursery, but have had many calls from our customers for fruit trees, and since there are large quantities of both peach and apple trees produced in this section, we are in position to supply our customers wants from reliable, trustworthy growers, who know how to grow and care for young trees properly.

## APPLES

The apple is the first fruit, both in importance and general culture. We are only offering a few of the best varieties that will give you fruit from early June to late fall.

### EARLY SUMMER VARIETIES

**EARLY HARVEST**—Medium to large; bright yellow; tender, juicy, well flavored. An excellent home market apple; invaluable in any orchard.

**RED JUNE**—An old-time variety of medium size. Deep red skin; white flesh, tender and juicy.

**YELLOW TRANSPARENT**—Early bearing variety that has proven both popular and profitable. Fruit large and yellow, with crisp, sub-acid flavor.

**HORSE**—Large, green, acid. Good for cooking and drying.

### AUTUMN VARIETIES

**GRIMES GOLDEN**—A high quality yellow apple of delicious flavor. A favorite in home orchards. Hardy and very productive.

**KINNARD'S CHOICE**—Large, dark red; resembling the Arkansas Black. Is good for market or table.

**JONATHAN**—Striped and splashed with dark red; of excellent quality and highly flavored.

**WEALTHY**—The fruit is a brilliant red, distinctly marked with narrow stripes and splashes of deeper red.

### EARLY WINTER VARIETIES

**DELICIOUS**—Striped and marked with light and dark red. Fruit large, of uniform size, round and long, tapering to a markedly ribbed nose. Tree hardy, bears abundantly.

**ROME BEAUTY**—Large, round red and juicy. Of a good quality and bears early.



Delicious

Winesap



**WINESAP**—Medium, dark red; very smooth. Apples juicy and rich, very valuable for both family and market. Trees hardy, and an early and constant bearer.

**YORK IMPERIAL**—Medium to large, oblate; color white, shaded with crimson, flesh firm, crisp, juicy and sub-acid. A good bearer and keeper. One of the best Winter Apples.

**BALDWIN**—Known to almost everyone as a good cooking and eating apple, and one that keeps well. Fine for drying.

Plant standard apple trees from 30 to 40 feet each way. At 30 feet apart it takes 48 trees per acre; 40 feet apart it takes 27 trees per acre.

Prices on one-year whips:	10	100
18 to 24 inch, one-year whips	----\$1.50	\$12.00
2 to 3 feet, one-year whips	---- 2.00	18.00
3 to 4 feet, one-year whips	---- 3.00	25.00

The following prices are for strong, two-year whips:

	Each	10	100
3 to 4 ft., 7-16 in. caliper	\$0.50	\$4.50	\$40.00
4 to 5 ft., 9-16 in. to			
11-16 in. caliper	---- .60	5.50	50.00

## ASPARAGUS

One of the finest of early spring vegetables and should be grown in all gardens. We have two good varieties.

**PALMETTO**—One of the best. Favorite in the South.

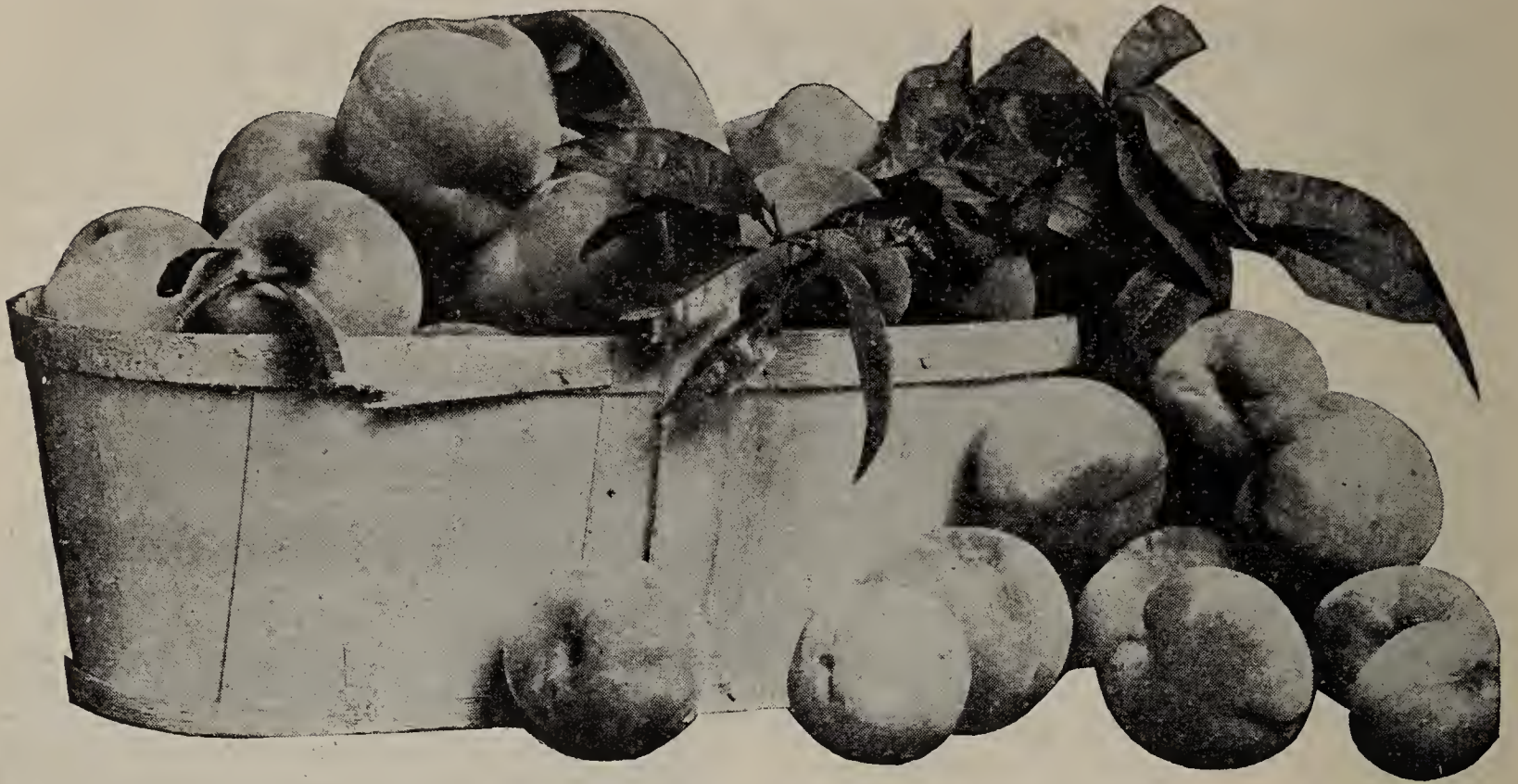
**WASHINGTON**—A new variety, tips tight and firm, stalks large and tender.

	Doz.	100
1 year roots	-----\$0.25	\$2.00
2 year roots	----- .35	3.00

## RHUBARB

**PIE PLANT**—Easy to grow and delicious for pies and sauces. Supplies early spring tonic, which is usually so much needed.

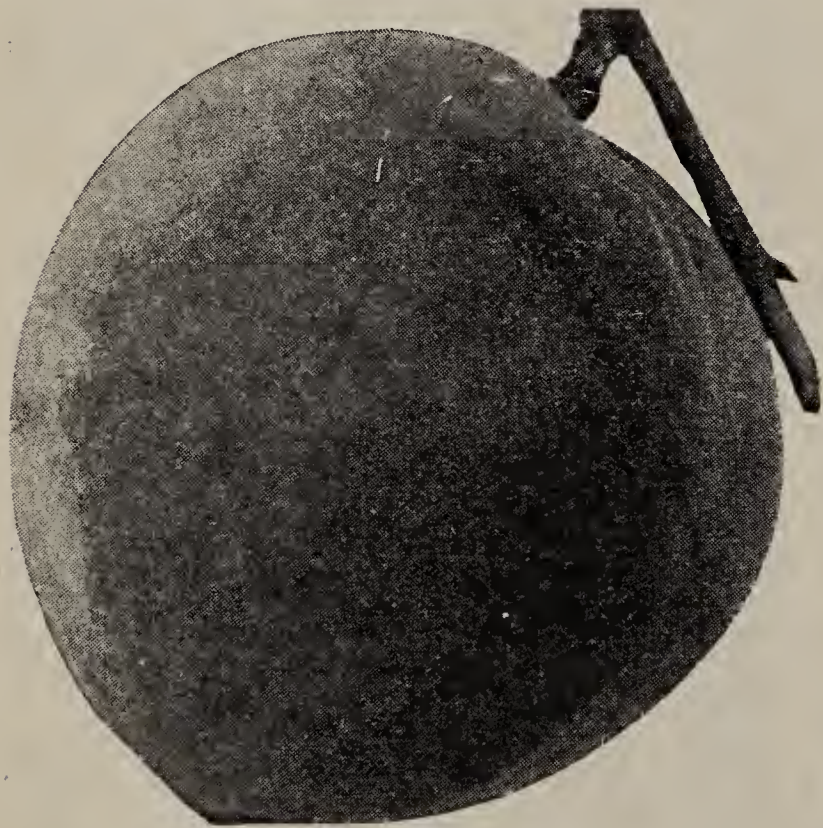
	Doz.	100
1 year	-----\$0.50	\$3.50
2 year	----- .75	4.00
3 year strong	----- 1.00	7.00



## PEACHES

The Peach holds a place second only to the apple in the United States. It ripens over a long period and with proper selection of varieties a succession of fruit may be had throughout the summer and early fall. We are offering only a few of the best and tried varieties.

**BELLE OF GEORGIA** (Free)—A medium season peach, very large, with a decided blush; firm flesh of delicate flavor. Bears regularly.



Elberta

**CARMAN** (Free)—Early. Large, roundish, pale yellow skin, flesh white and sweet. A very hardy and good all round peach. Ripens here about July 1st.

**CHAMPION** (Free)—Early, ripens last of July. The flesh is delicious, rich and sweet. Skin creamy with red cheeks. Many specimens have measured 10 inches in circumference.

**EARLY ELBERTA** (Free)—Like the Elberta, but ripens a little earlier.

**ELBERTA** (Free)—Medium season variety and a standard peach wherever peaches are grown. A large yellow peach shaded with red; yellow flesh. Dependable as a regular and uniform bearer.

**HEATH CLING**—A clingstone Peach. Very large, creamy white with delicate red blush; flesh white, slightly splashed red at the tip. Ripens in early September.

**HILEY** (Free)—Early, large, creamy white with red cheek; white flesh and juicy. Ripens about the first of July.

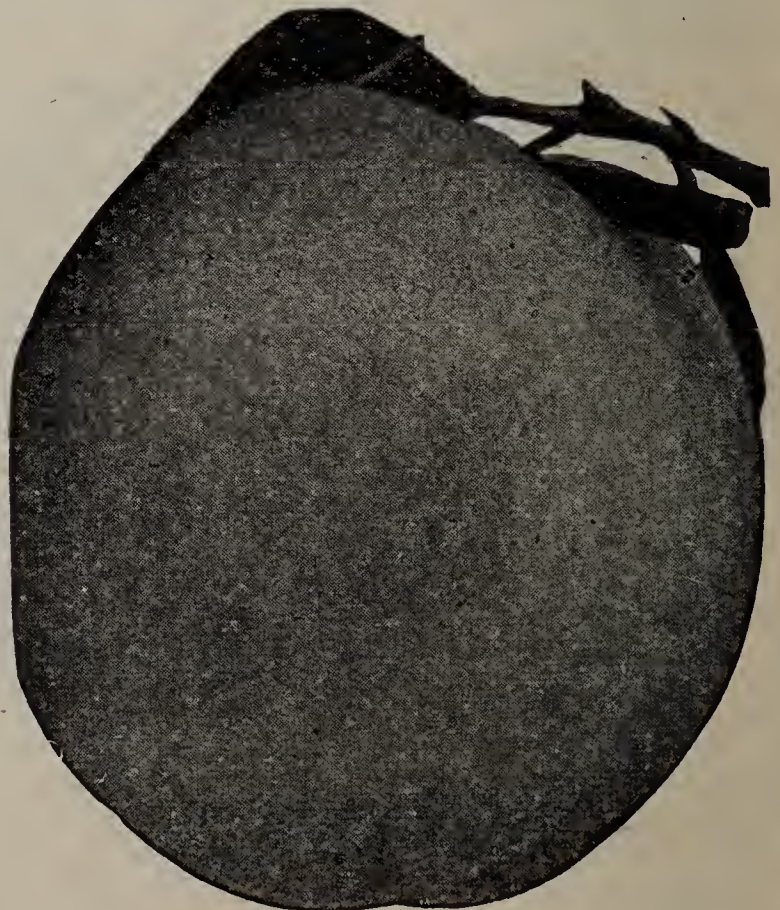
**J. H. HALE** (Free)—The beautiful midseason Peach named for Hale, the Georgia Peach King. Large, round, yellow and nearly covered with red. Very firm flesh and of fine quality.

**MAYFLOWER** (Free)—One of the earliest Peaches. Red all over. Tree a strong grower and heavy bearer.

**ROCHESTER** (Free)—A wonderful new Peach, originating near Rochester, N. Y. Early, prolific, very hardy. Fruit large, light yellow to orange, with red blush. One of the best.

**CRAWFORD'S EARLY** (Free)—Large, rather oblong, with yellow skin and yellow flesh.

**KRUMMEL** (Free)—A freestone peach. Fine flavor; skin yellow with carmine blush.



J. H. Hale

**RED BIRD CLING**—Creamy white, nearly covered with red, semi-cling. A fine market Peach.

Prices all varieties of peaches, one year trees.

	10	100
18 to 24 inch, June bud -----	\$1.50	\$12.00
2 to 3 feet, one year -----	2.00	18.00
3 to 4 feet, one year -----	3.00	25.00

## CHERRIES

Not a case of can you afford them, but a case of you cannot afford to be without them. How the birds and children love cherry time! And where is the man who doesn't relish a big juicy Cherry pie? Truly one of the most popular and healthful of all fruits, how easily the cherry has come to the front and is being more widely planted every year.

### SWEET CHERRIES

**BLACK TARTARIAN**—A favorite sweet cherry. Fruit large and very dark red, almost black when ripe; flesh firm and of delicate flavor. Very high quality. Ripens in June.

**GOVERNOR WOOD**—Fruit large, yellow, nearly covered with bright red berries; immediately after the Black Tartarian.

**NAPOLEON**—An ideal, light colored sweet Cherry. Good for shipping purposes. Very attractive coloring of pale yellow, with amber cheek. Fruit large, heart-shaped; flesh firm and of delightful flavor.



Montmorency

**GARBER**—Fruit large, resembling the Keiffer but ripens two or three weeks earlier. Tree free from blight, very productive.

**KIEFFER**—This is the most popular variety for market; excellent for canning and cooking. Good bearer and the fruit keeps well into the winter.

**PINEAPPLE**—A strong, vigorous grower, which is very productive. Tree is practically blight proof, and has proven one of the best for southern planting.

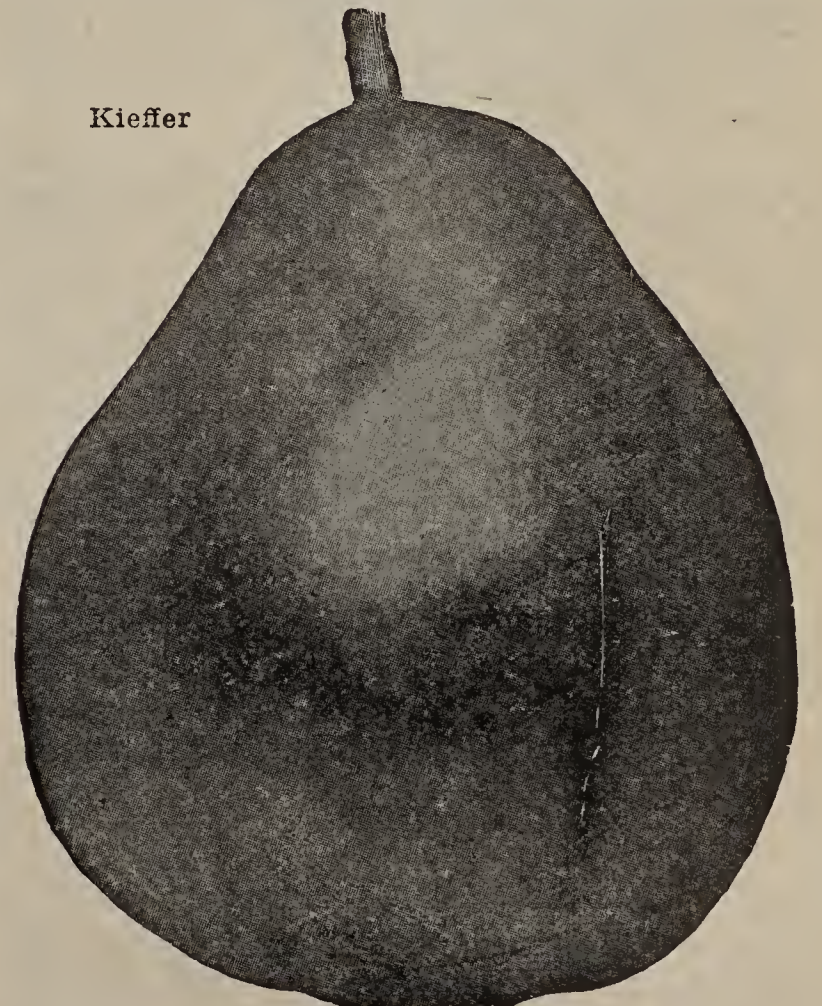
Prices, all varieties of pears:

	Each	10	100
3 to 4 feet, 1-year whips --	\$0.35	\$3.00	\$25.00
4 to 5 feet, 1-year whips --	.45	4.00	35.00
5 to 6 feet, 1-year whips --	.75	6.50	50.00

When you are through with this catalogue, please hand it to one of your friends.



Black Tartarian



Keiffer

### SOUR CHERRIES

**EARLY RICHMOND**—Very early sour Cherry; very popular. Bright red. Hardy and grows to a compact tree.

**MONTMORENCY**—A well known hardy and productive cherry. The fruit is much larger than that of the Early Richmond and is slightly acid. Bright red; ripens in early July.

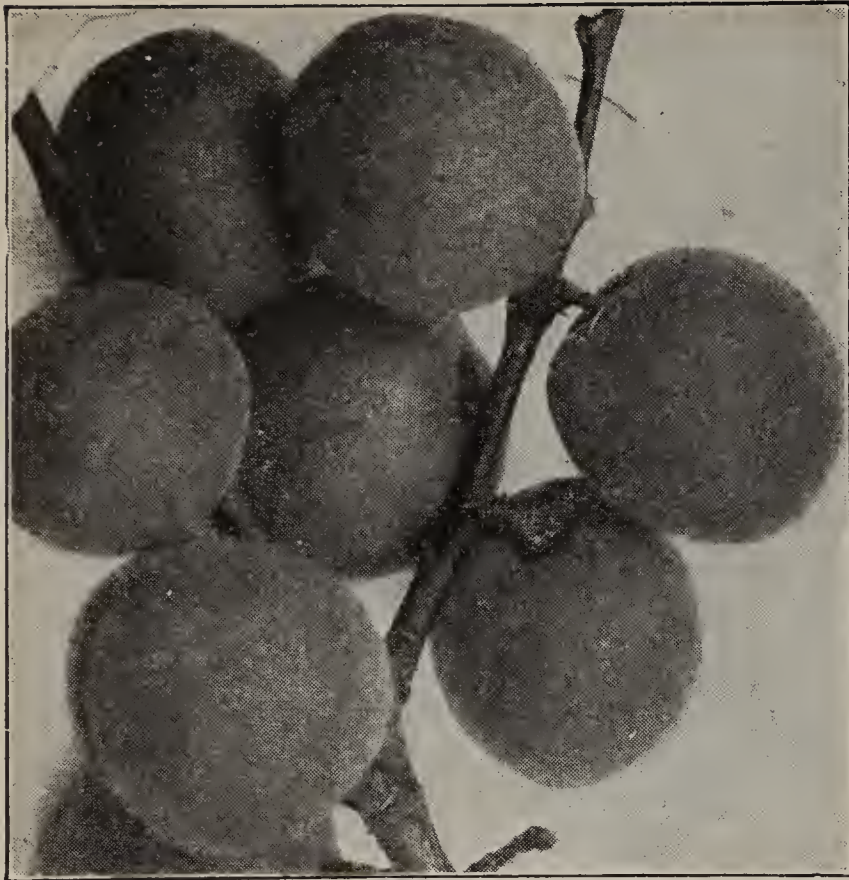
Prices all varieties of Cherry trees:

	Each	10	100
2 to 3 feet -----	\$0.30	\$2.50	\$21.00
3 to 4 feet -----	.40	3.00	25.00
4 to 5 feet -----	.50	4.50	40.00

## PEARS

The growing of this valuable fruit both for home and market purposes cannot be too strongly urged. Pears bear early. The three varieties we list are the really worth while kinds.

**BARTLETT**—Golden yellow with red cheek, fine grained, melting, of delicious quality. Bears when very young. Best known and a great favorite.



Burbank

## PLUMS

The market demand for high grade plums is almost unlimited and for dessert, cooking and canning, no fruit is more delicious.

**ABUNDANCE**—One of the largest, best and hardest of the Japanese Plums. Pale amber, turning to red; yellow sweet flesh.

**BURBANK**—Large, deep red, with yellow flesh; juicy and sweet; tree vigorous and strong. Another of the Japanese varieties.

**RED JUNE**—Japanese. Skin garnet-red; flesh light yellow, somewhat meaty; sweet, good; season early, ripens a week or so before the Abundance. Tree large, vigorous, spreading, hardy and productive.

**KELSEY'S JAPAN**—Size large, heart-shaped, long pointed. Color greenish yellow, sometimes flushed with red. Prolific and bears while young.

**SHROPSHIRE DAMSON**—Skin purplish black with thick bloom and numerous dots; flesh golden yellow. Season late; fruits small in size. An old, well known variety.

Prices all varieties of Plums:

	Each	10	100
3 to 4 feet	-----\$0.40	\$3.50	\$30.00
4 to 5 feet	----- .50	4.50	40.00



Cumberland

## FIGS

Figs are more difficult to transplant than any other tree, except the Persimmon. Small trees are more likely to live than the larger size.

**BROWN TURKEY**—Large, brown, resembles the Brunswick, probably better. It is sometimes called the Brunswick.

	Each	10
12 to 18 inch	-----\$0.20	\$1.80
18 to 24 inch	----- .25	2.00

## BLACKBERRIES

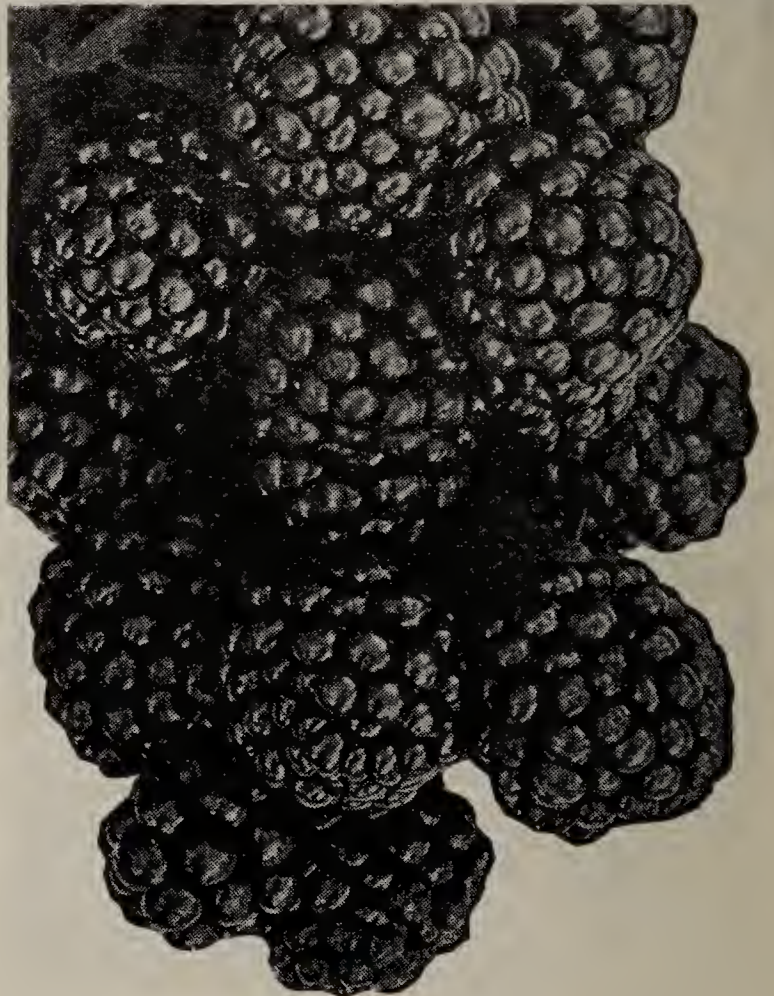
**EARLY HARVEST**—Valuable because one of the earliest to ripen; berries medium size and good quality. A strong grower and exceedingly prolific.

**SNYDER**—Another hardy and productive variety. Fruit early, medium sweet and of good size; no hard core. Well known and desirable.

**ELDORADO**—Very hardy, enduring the Winters of the far Northwest without injury; very productive and of extra fine quality. A dependable variety to plant.

Prices all varieties of Blackberries:

	10	100
Good strong plants	-----\$0.50	\$3.50



Eldorado

## RASPBERRIES

**COLUMBIAN**—Purple berries, very large, juicy and sweet. Favorite canning variety. Bush of strong growth and a heavy bearer.

**CUMBERLAND**—Black. Early, firm, good size berries of fine quality and hardy, withstanding the cold of the northern states as well as the heat of the south.

**GREGG**—A black Raspberry. Berries large, firm, ship well. Black, with light bloom; few seeds; quality good. Makes very strong canes.

**ST. REGIS**—Everbearing Red. Large, sweet berries of attractive red, producing a good crop in July and continues to fruit all summer. Very profitable, as the late berries command high prices. 10c each; 75c per 10; \$5.00 per 100.

**LATHAM**—A new Red Raspberry, hardy, productive, excellent for garden planting. The best paying late berry, brings top prices on all markets. 10c each; 75c per 10; \$5.00 per 100.

Prices all varieties except St. Regis and Latham:

	Each	10
Good strong plants	-----\$0.05	\$0.40
Common Wild Black Cap	----- .03	.25



Progressive Everbearing

## STRAWBERRIES

**AROMA**—Steady producer. Big deep red berries of excellent eating quality.

**CHAMPION**—A late and heavy bearer of good size berries, dark red and fine flavor.

**GANDY**—A standard market variety. Fruit firm and of good quality. Excellent for canning.

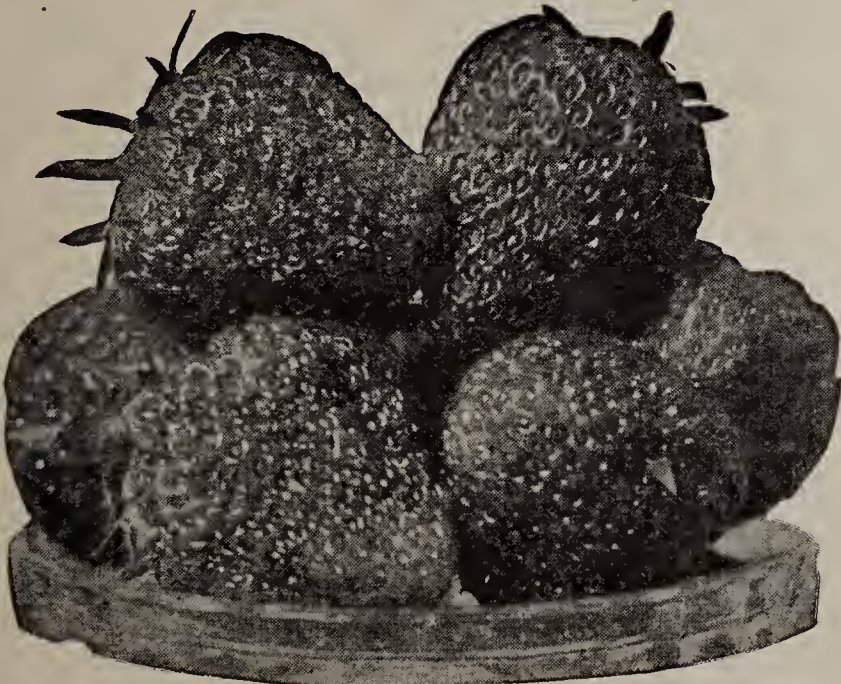
**KLONDIKE**—A good berry, rich blood-red in color, having a fine flavor that is neither sweet nor sour.

**PREMIER**—Extra early. Produces large quantities of good sized attractive berries of excellent quality.

**PROGRESSIVE EVERBEARING**—The berries are just about the size and color of the Dunlap and produced in great profusion. 50c per dozen; \$2.00 per 100; \$7.50 per 1000.

**BLAKEMORE**—A new introduction. The berries are large, solid, finely flavored, good keepers. Stands dry weather and plants grow large, holding up the berries off the ground and enabling them to grow large.

Prices on above varieties: 75c per 100; \$3.00 per 500; \$5.00 per 1000.



Blakemore

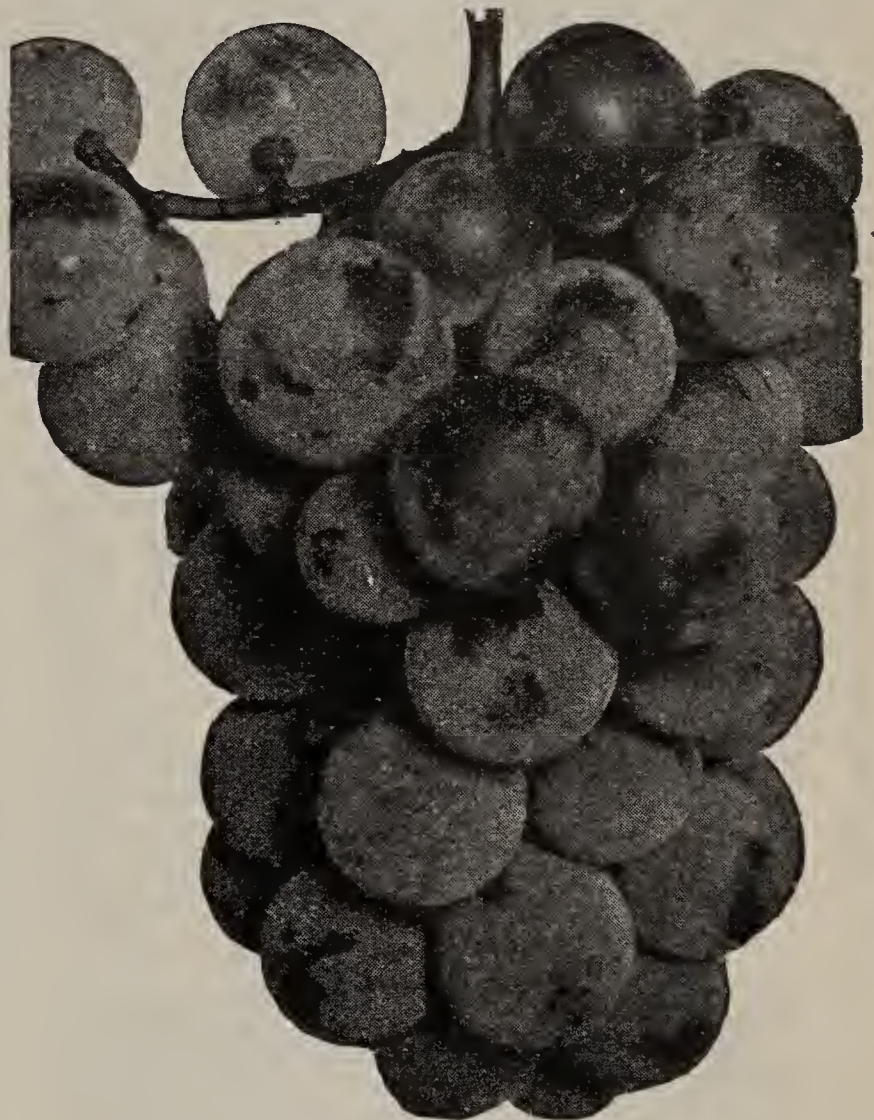
## GRAPES

The Grape is one of the easiest fruits to grow. There is scarcely a country or city yard or garden so small that space cannot be found to plant one or more Grape Vines. Grapes will thrive anywhere, in any climate or soil. Will do well on soil too poor to raise a crop of grain or other fruit. A Grape vineyard represents a permanent investment that will pay big dividends every year for a lifetime.

**CONCORD**—Bunch and berry very large, blue-black; skin thin, cracks easily; flesh sweet, pulpy and tender. One of the most reliable and profitable varieties.

**CATAWBA**—Large bunch and berry; deep red, with lilac bloom; juicy vinous, and of musky flavor.

**MOORE'S EARLY**—Bunch medium; berry large, round, black, with heavy blue bloom; good quality. Early and desirable.



Concord

**NIAGARA**—Bunch and berry large; greenish yellow; flesh pulpy, sweet, foxy. Its remarkable size and fine appearance give it much popularity as a market variety. Vigorous and prolific.

**WORDEN**—Resembles Concord, but is earlier and larger.

**AGAWAM**—Berries very large, with thick skin; pulp soft, sweet and sprightly; very vigorous, ripens early.

**CAMPBELL'S EARLY**—Very large and fine early grape, black; strong, vigorous, hardy vine. Seeds few and small, parting easily from the pulp. Profitable for marketing.

Prices all varieties of Grapes:

	Each	10	100
Two-year No. 1	\$0.25	\$2.00	\$15.00
Two-year No. 2	.20	1.50	10.00

### NOTICE SPECIAL PRICES

Hand this catalogue to your friends, but do not do so until you have sent in your own order. Your friends will thank you for it, and we will THANK YOU, TOO.

# PLANT—Forest Tree Seedlings for Profit, Shade and Beauty

Will you become a member of a tree planting association and assist President Roosevelt reforest our millions of acres of the best tree growing land in the world in the next few years for future generations?

That our timber will be gone before we can grow trees cannot be disputed, and to take care of that situation, no farm should be without a grove of Forest Trees. The expense is very small, it pays well in shade and timber, and may mean a good estate for your children in years to come.

**FAGUS BEECH**—Beeches are among the noblest trees of creation, long lived, symmetrical, and beautiful at all seasons of the year. They make dense shade and thick dark woods. The colored-leaf forms are among the finest ornamentals for specimen or avenue trees. American Beech: Large spreading branches, smooth bark of a light steel gray color make it an interesting tree in the landscape and produce edible nuts. Use some of these seedlings in your plantings.

	Per 100	Per 1000
4 to 6 inch .....	\$ .75	\$ 5.00
6 to 12 inch .....	1.00	8.00
12 to 18 inch .....	1.50	12.00
18 to 24 inch .....	2.00	15.00
2 to 3 feet .....	2.50	20.00

**WATER BEECH (Carpinus Americana)**  
—American Hornbeam, a bushy tree with dense, slender, often pendulous branches and dark bluish green foliage, changing to scarlet or orange yellow in the fall. May be used as a screen or trimmed into a hedge.

6 to 12 inch s. ....	\$1.50	\$10.00
12 to 18 inch s. ....	2.00	15.00
18 to 24 inch s. ....	2.50	20.00
2 to 3 feet s. ....	3.00	25.00

**CATALPA SPECIOSA (Western Catalpa)**

12 to 18 inch s. ....	\$1.00	\$ 7.50
18 to 24 inch s. ....	1.50	10.00
2 to 3 feet s. ....	2.00	15.00
3 to 4 feet s. ....	2.50	20.00

**CERCIS CANADENSIS (Red Bud)**

6 to 12 inch s. ....	\$1.25	\$10.00
12 to 18 inch s. ....	2.00	15.00
18 to 24 inch s. ....	2.50	20.00
2 to 3 feet s. ....	3.00	25.00
3 to 4 feet .....	5.00	40.00

**CORNUS FLORIDA (White Flowering Dogwood)**

6 to 12 inch s. ....	\$1.50	\$10.00
12 to 18 inch s. ....	1.75	15.00
18 to 24 inch s. ....	2.50	20.00
2 to 3 feet s. ....	3.00	25.00
3 to 4 feet s. ....	4.00	35.00

**LIRIODENDRON TULIPIFERA (Tulip Tree)**

	Per 100	Per 1000
6 to 12 inch s. ....	\$ .85	\$ 6.00
12 to 18 inch s. ....	1.25	8.00
18 to 24 inch s. ....	1.75	12.50
2 to 3 feet s. ....	2.25	15.00

**LOCUST (Black or Yellow)**

4 to 6 inch s. ....	\$ .60	\$ 4.00
6 to 12 inch s. ....	.75	5.00
12 to 18 inch s. ....	1.00	7.00
18 to 24 inch s. ....	1.25	10.00
2 to 3 feet s. ....	1.50	12.50
3 to 4 feet s. ....	2.00	17.50

**MAPLE (Hard or Sugar)**

12 to 18 inch s. ....	\$2.00	\$18.00
18 to 24 inch s. ....	3.00	25.00
2 to 3 feet s. ....	4.00	35.00
3 to 4 feet s. ....	7.00	50.00

**WALNUT (Black)**

**WALNUT (White or Butternut)**

6 to 12 inch s. ....	\$1.50	\$10.00
12 to 18 inch s. ....	2.00	15.00
18 to 24 inch s. ....	2.50	20.00
2 to 3 feet s. ....	3.50	30.00
3 to 4 feet s. ....	5.00	40.00

**LIQUIDAMBER (Sweet Gum)**

6 to 12 inch s. ....	\$1.25	\$10.00
12 to 18 inch s. ....	1.75	12.00
18 to 24 inch s. ....	2.50	18.00
2 to 3 feet s. ....	3.00	25.00

**LONICERA, HALLIANA**—Hall's Japan Honeysuckle. Dark green, dense foliage, almost evergreen, with fragrant white flowers, changing to yellow. A good old dependable Honeysuckle. Grows rank under any conditions. These are being used in large quantities for reforestation work, for planting gullied lands, banks and unsightly places. If wanted in quantity lots, write for special quotations.

	Each	10	100
Medium .....	\$ .10	\$ .50	\$3.00
One Year No. 1 .....	.15	.75	5.00
Two Year No. 1 .....	.25	1.25	7.00

All the above stock offered are seedlings. If you want heavy, transplanted stock, see other part of catalogue.



# SPECIAL BARGAIN COLLECTIONS

## OFFER NO. 5

**12 ROSES**, including the most beautiful and most popular varieties.



- 4 Red Roses—2 Francis Scott Key and 2 Gruss an Teplitz
- 4 Pink Roses—2 Dame Edith Helen and 2 Killarney Pink
- 2 Yellow Roses—1 Joanna Hill and 1 Sunburst
- 2 Multicolor—1 Talisman and 1 President Hoover

12 two-year Roses, value \$5.85,

**SPECIAL PRICE, \$4.95**



## OFFER NO. 6

### WELL-KNOWN EVERBLOOMING ROSES

- 2 Red Radiance
- 2 Pink Radiance
- 2 K. A. Victoria, white
- 2 Lady Hillingdon, yellow

Favorite collection, our special price for these 8 Roses, \$2.75

## OFFER NO. 7

For naturalistic effects, try our Native Wild Rose, Slender, recurving or climbing branches. Deep rose flowers.

15 cents each; \$1.00 per dozen.

## Brief Planting Instructions

**BRIEFLY, THIS IS WHAT YOU SHOULD DO ON ARRIVAL OF TREES:**

Place in a protected place, keeping moist if held for a day only, else bury roots in ground at once.

**Pruning Is Necessary**—General rule is to cut off one-half to two-thirds the length of the lateral branches. This balances loss of root system necessary in digging the tree. Remove all label wires.

**Plant Carefully**—Dig ample holes to take roots without crowding. Plant not more than an inch or two deeper than they formerly stood. Work fine soil into the roots, be sure there are no air pockets and tamp earth solid; to insure contact with every root. Water, if possible, before applying the top three inches.

**Mulching or Cultivation** is necessary if good growth is expected. Both conserve the moisture, which is very essential.

**Wrapping of the Bodies** up to where the branches start with burlap to protect the trunks from the blistering sun is advised.

**Watering**—Sprinkling and spraying are of little value during times of drought. Remember the roots of most plants are buried 8 to 18 inches in the soil and it takes a good soaking to reach them. Let the hose run slowly for an hour or so—it pays.



## OFFER NO. 8

- 250 Latham Raspberries
  - 250 Wineberry Raspberries
  - 250 Native Black Cap Raspberries
  - 250 Native Blackberry
- All strong plants,

**BARGAIN PRICE, \$14.40**



## Regarding Orders, Guarantees, and Customs

Write plainly and give explicit directions, otherwise we will forward according to our best judgment. All goods travel at purchaser's risk. We assume no responsibility for the goods after delivery to the forwarding companies.

We use every care to secure prompt deliveries, but we are not liable for delay or damage in transit. Our responsibility in this respect ends upon delivery in good order to transportation company; but we will gladly render all the aid we can in case claim becomes necessary.

### CLAIMS

Claims, to receive consideration, must be made within ten (10) days after receipt of goods.

### GUARANTEE

We are very careful to keep each variety true to name as labeled and are ready at any time to replace, upon proper proof, any that may prove otherwise, free of charge, or refund the amount paid, but it is mutually agreed between the purchaser and ourselves that we shall at no time be liable for an amount larger than the original purchase price.

### TERMS

Cash with order unless otherwise arranged. Six per cent interest charged on overdue bills. Five plants at 10 rates; fifty at 100 rates. All quotations in this list are net for the goods packed—no extra charges for packing and delivering to carriers.

Customers pays carriage charges. If delayed, or lost on the road, notify us and we will do all possible to get it through, or collect claim, but are not responsible for carrier's neglect. We advise express shipments as cost is little more than freight on small lots, and stock gets through quicker and safer. Light packages can go by parcel post.

Postage should accompany parcel post orders. (15 per cent of list price).

### SUNDAY VISITORS

We are always glad to have those interested visit our nursery.

The Book of all books says there are six days to work and one for rest and worship in each week. So, we are not open for business on Sunday. But, to those who cannot find time to visit the nursery during the week, we shall be glad to show them our stock after Church hours.

Hand this catalog to your friends.

If you are through with it, your friends will appreciate you loaning it to them, and we will thank you, too.

Everything is offered subject to being unsold on receipt of order and subject to shortage or failure of crops and other causes beyond control. By placing orders, buyers are considered to agree with these terms.

Certificate of inspection will be sent with each shipment.

We are members of the American Associations of Nurserymen.

REFERENCE—Dun and Bradstreets, any bank or business house in McMinnville.





**Large  
Evergreens  
for Specimen  
Plantings**



- |                          |                           |                          |
|--------------------------|---------------------------|--------------------------|
| 1. Pyramidal Arbor Vitae | 6. Douglas Fir            | 11. American Arbor Vitae |
| 2. Irish Juniper         | 7. Chinese Juniper        | 12. Golden Biota Nana    |
| 3. Pfitzer's Juniper     | 8. Savin Juniper          | 13. Virginia Juniper     |
| 4. Norway Spruce         | 9. Chinese Arbor Vitae    | 14. Douglas Arbor Vitae  |
| 5. Mugho Pine            | 10. Tom Thumb Arbor Vitae |                          |

	Each
1. Pyramidal Arbor Vitae, 30/36" .....	\$2.25
2. Irish Juniper 30/36" (not illustrated) .....	1.50
3. Pfitzer's Juniper, 18/24" spread .....	1.50
4. Norway Spruce, 2/3' .....	2.00
5. Mugho Pine, 12/15" .....	1.50
6. Douglas Fir, 2/3' .....	2.00
7. Stricta Juniper, 30/36" .....	2.10
8. Savin Juniper, 24/30" .....	2.00
9. Chinese Arbor Vitae, 36/42" .....	1.75
10. Tom Thumb Arbor Vitae, 18/24" .....	2.00
11. American Arbor Vitae, 36/42" .....	2.00
12. Berckman's Golden Arbor Vitae, 30/36" .....	3.00
13. Juniper Virginiana (Red Cedar), 4/5' .....	1.75
14. Hoveyi Arbor Vitae, 24/30" .....	2.00
	\$27.35

**SPECIAL PRICE ABOVE COLLECTION, 14 Plants, B&B ..... \$19.25**

**ONE-HALF OF COLLECTION, 7 Plants, Your Choice ..... \$10.00**

**Try These Collections of Select, Strong, Healthy Plants**

**Offer No. 1**

**FOR BERRIES IN WINTER**

A little winter cheer in the form of bright colored berries is welcome on any place.

- Red-Ozier Dogwood, white berries.
- Callicarpa, violet-purple berries
- Japan Barberry, bright red berries.
- High Bush Cranberry, red berries.
- Coralberry, coral-red berries
- Snowberry, waxy white berries.

**6 Good Shrubs for \$1.25**

**Offer No. 2**

**THESE FOR CONTINUOUS BLOOM**

- Abelia, one of the best.
- Hydrangea A. G. (Hills of Snow).
- Althea (Rose of Sharon).
- Butterfly Shrub (Buddleia).
- Spirea Anthony Waterer.

**5 Good Plants \$1.50**

**Offer No. 3**

**FOR THE SHADY CORNER**

- Golden Bell (Forsythia).
- Japanese Barberry (Berberis).
- Rhodotypos (Jethead).
- Lonicera (Honeysuckle).
- Pentaphylla (Five leaved Aralia).
- Aronia (Red Chokeberry).
- Opulifolia (Ninebark).
- Philadelphus (Mock Orange).

**Any 5 for \$1.00**

**Offer No. 4**

**THE FIVE BEST DWARF SHRUBS**

- Spirea Anthony Waterer.
- Spirea Thunbergi (Snow Garland).
- Pink Flowering Almond.
- Deutzia Gracilis (Slender Deutzia).
- Japanese Barberry.

**Special Price, 5 for \$1.35**

# **BOYD NURSERY CO., McMinnville, Tenn.**



*Forest and Shade Trees, Ornamental  
Shrubs, Evergreens and Roses*

**BEAUTIFY YOUR HOME THIS SEASON  
MAKE ITS SURROUNDINGS PLEASANT**

**LOCATION**—McMinnville is located in Middle Tennessee on N. C. & St. L. Railroad. It is located on State Highways No. 1, No. 55 and No. 56, and U. S. Highway No. 70, and the Broadway of America. Nurseries and office located three-fourths mile west of square, on new Manchester Pike Highway No. 55-A. Visitors always welcome.